

# 12428 55th Avenue, Surrey

\$2,399,998



Panorama Ridge ! Nicely nestled on a private .90 acre lot on quite street in prime Panorama Ridge. Spacious home with versatile floor plan with generously sized bedrooms, offering space for comfortable living that can accommodate various living arrangements . This private lot is backing on to Joe Brown Park which adds even more tranquility and natural beauty. The large indoor pool is a perfect spot for entertaining or simply unwinding. A large driveway with ample parking which is ideal for multiple vehicles. Conveniently located within walking distance to Colebrook Elementary. Excellent opportunity to purchase a private lot to build your new custom home or live in the present home for many years to come . Please DO NOT WALK on property , appointments required . Thank you .

## KEY INFORMATION

MLS® R2871394

Residential Detached

Panorama Ridge

4 Bedrooms

3 Bathrooms

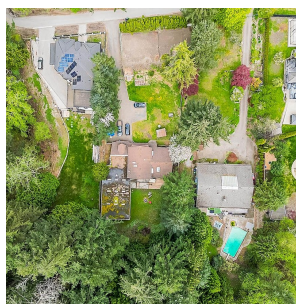
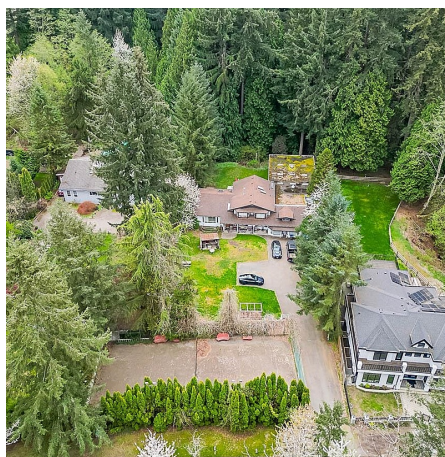
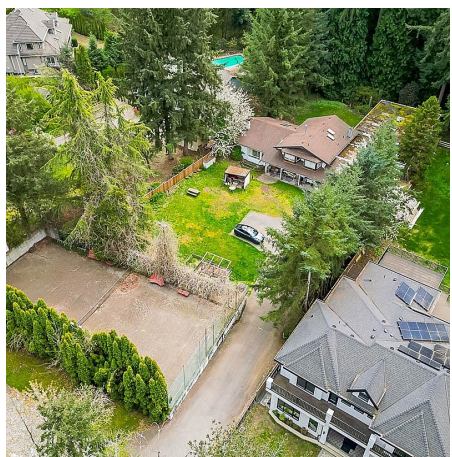
3,757 SF

39,204 SF Lot

## FEATURES

Year Built: 1976

Listed By: Royal LePage West Real Estate Services



rennie