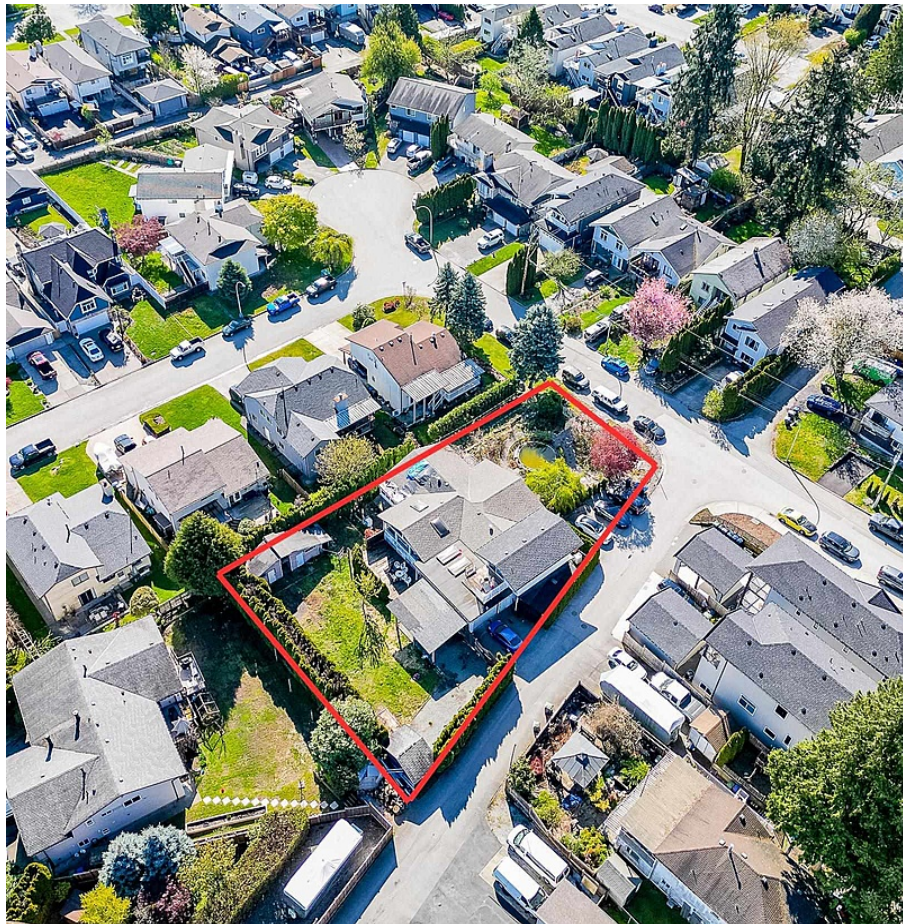


1977 Warwick Avenue, Port Coquitlam

\$2,650,000



SUBDIVISION IN PROCESS. This 14,470 sqft lot is in the process of being subdivided into TWO LOTS (8917.11 sqft & 5504.84 sqft). Each lot will be zoned RS-4 Residential and will be ready to build. Building plans have already been designed, with plans for Lot 1 to accommodate a single family home with a secondary suite and coach house and Lot 2 to accommodate a single family home with a secondary suite. The lengthy and expensive subdivision process is well underway. Lots can be delivered ready to build!

KEY INFORMATION

MLS® R2872377

Residential Detached

Lower Mary Hill

6 Bedrooms

5 Bathrooms

4,600 SF

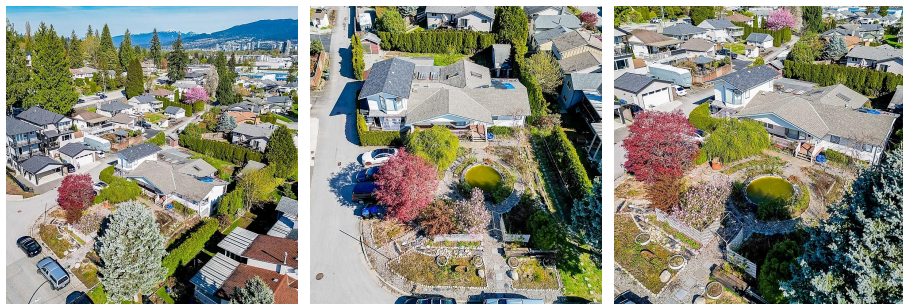
14,470 SF Lot

FEATURES

Year Built: 1952

Views: MOUNTAIN

Listed By: Royal LePage Sterling Realty



rennie