

6557 Noblewood Pl, Sooke

\$839,900



This exquisite 3-bed home in Woodland Creek built by SC Smith Building Co. nestles within a serene neighbourhood, offering an ideal retreat for modern living. Inside, you're greeted by a timeless design that seamlessly blends functionality with elegance. The bright & spacious floorplan boasts southern exposures, ensuring ample natural light throughout the day. The open-concept main floor features 9' ceilings, a fully equipped kitchen with SS + gas range & quartz counters, flowing with luxury vinyl plank flooring into the cozy living room with a gas fireplace. Step outside onto the quiet patio & fully fenced yard which backs onto the "Sooke Trail System," providing safe walking & biking adventures right at your doorstep. Upstairs you'll find 3 generously sized bedrooms, the primary suite features built-in closet organizers and heated tile ensuite floors. This home is easy walking distance or a short drive to schools, parks & various amenities - perfect for families & individuals alike. (id:56120)

KEY INFORMATION

MLS® 957587

Residential Detached

Broomhill

3 Bedrooms

3 Bathrooms

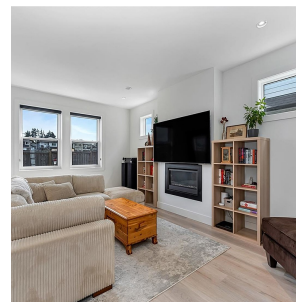
1,720 SF

3,771 SF Lot

FEATURES

Year Built: 2021

Listed By: rennie & associates realty ltd.



John Hircock
250.881.0357
jhircock@rennie.com
rennie.com/johnhircock

rennie