

308 5655 Inman Avenue, Burnaby

\$648,000



Rare Find CORNER 1 bed Plus DEN with Bonus: 1 extra room covert to a 2nd bedroom. Well Kept with Very high quality & beautiful unit. European builder. Ideal Central Park location, steps from Central Park, Metrotown, Kingsway & Patterson Skytrain Station. Top Floor with 9 ft ceiling. Brushed stainless steel appliances, luxurious quartz kitchen & baths countertops, quality laminate floors. 1 parking & 1 storage locker. V pet & rental allowed.

KEY INFORMATION

MLS® R2873010

Residential Attached

Central Park

1 Bedroom

1 Bathroom

678 SF

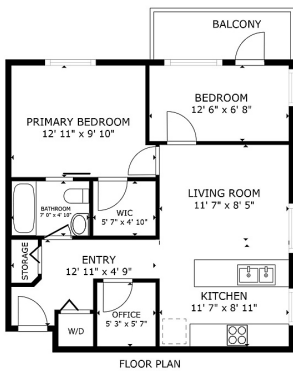
\$312.94 Maintenance Fees

FEATURES

Year Built: 2012

Views: MOUNTAIN

Listed By: Nu Stream Realty Inc.



308-5655 INMAN AVE BURNABY V5H 2M2
TOTAL: 678 sq. ft.

