

10085 Park Drive, Surrey

\$1,195,000



The perfect place to get started in this lovely family home located on a quiet street and steps to everything. This lovely well cared for home boast original HW floors, with an updated kitchen, 2 beds up & 1+ den down. Updates include Furnace, Air Cond, HW Tank and RI bath in bsmt . You will enjoy The private covered deck, fenced yard backs on to tranquil greenbelt with walking trails, and steps to Robson park, Schools and bus at corner & great for commuting with access to all routes. Easy to convert to secondary Acc. The bonus RV parking will fit a full size unit, so call your Realtor and see it before its gone. Very flexible dates.

KEY INFORMATION

MLS® R2872399

Residential Detached

Cedar Hills

3 Bedrooms

2 Bathrooms

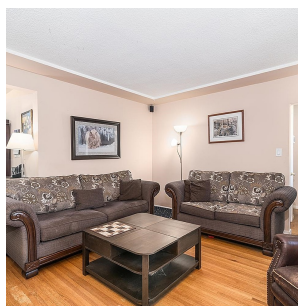
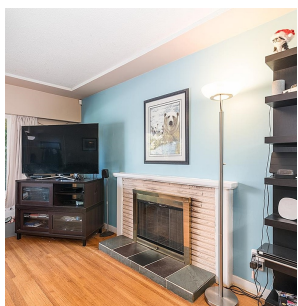
2,417 SF

6,840 SF Lot

FEATURES

Year Built: 1957

Listed By: RE/MAX Performance Realty



rennie