

**49 288 171 Street, Surrey**

**\$889,000**



IMMACULATE 3-BED plus DEN townhouse at The Crossing, in beautiful Pacific Douglas. Only 8 years young, nestled in a SERENE TREED ENCLAVE, this SOUTH FACING home with BRIGHT, SPACIOUS 1380 sqft OPEN CONCEPT living area, is the perfect home for your family. You'll love the CHEF'S KITCHEN complimented with STAINLESS STEEL APPLIANCES, including a gas stove, wall oven, practical undermounted sink and quartz counters. This PERFECTLY LAID OUT home has 3 bedrooms above, ensuite to the primary with double sinks, over-sized shower and walk-in closet. Steps from The Hills Golf Course, Peace Arch Park, Pacific Douglas Elementary, the border and OCEAN. school bus to Earl Marriott Sec. School. Rarely available, don't miss this one! OPEN HOUSE Thu April 25th 5pm-7pm, Sat/Sun April 27/28 2pm-4pm.

**KEY INFORMATION**

MLS® R2873494

Residential Attached

Pacific Douglas

3 Bedrooms

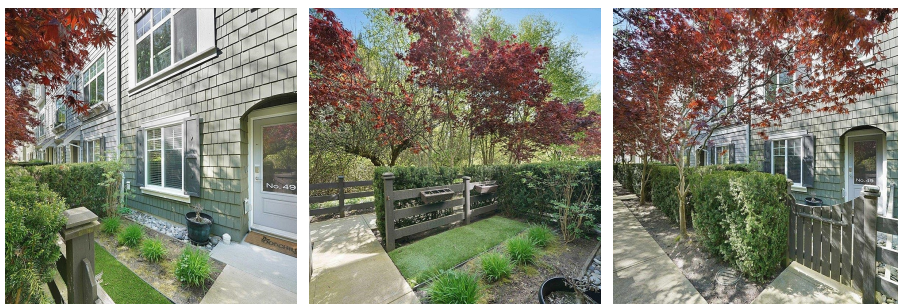
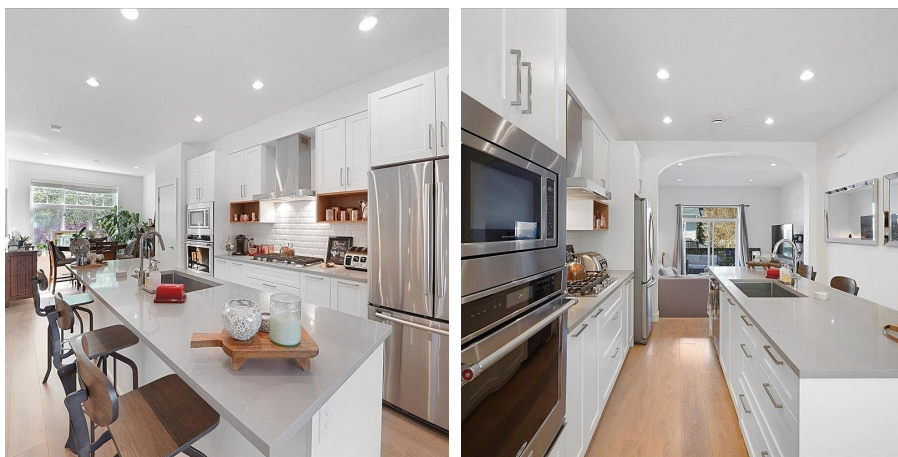
3 Bathrooms

1,382 SF

**FEATURES**

Year Built: 2016

Listed By: RE/MAX City Realty



**rennie**