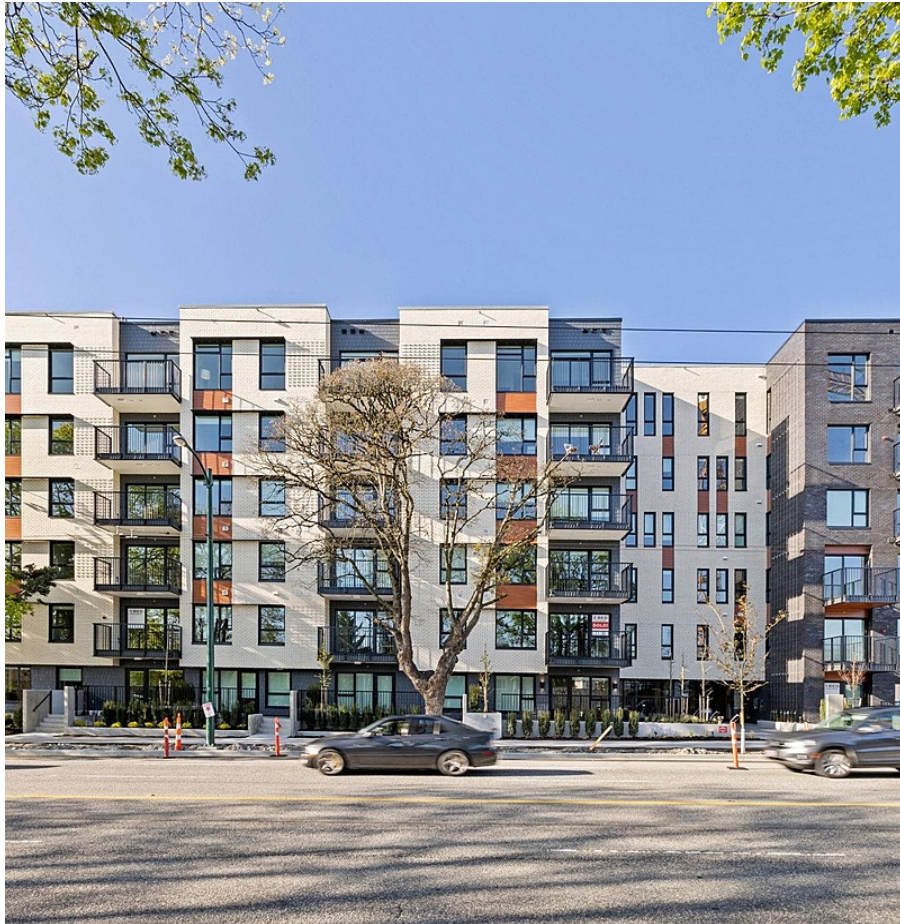


# Ph606 2235 E Broadway, Vancouver

\$799,900



Welcome to Popolo in a vibrant pocket of Grandview Woodland! This BRAND NEW 1 Bed + Den PENTHOUSE boasts 10'8 high ceilings & a sunny balcony with panoramic open views. Carefully curated finishes featuring a stunning kitchen with island, Fulgor/Milano & Blomberg appls, gas cooktop & Veneta Cucine full height cabinetry w/smart storage drawers & pantry. Focused Den area for a home office, indulgent bath w/black matte fixtures, A/C, laminate flooring throughout & 1 parking & locker. Join your friends in the Popolo Lounge with full kitchen & outdoor dining - perfect for cool summer nights! Or dive into a new hobby in the common workshop studio. Walk to The Drive, Trout Lake Comm Ctr, Farmers Market, cafes, grocers, Broadway Skytrain or drive 8 mins to Downtown.

## KEY INFORMATION

MLS® R2873649

Residential Attached

Grandview Woodland

1 Bedroom

1 Bathroom

626 SF

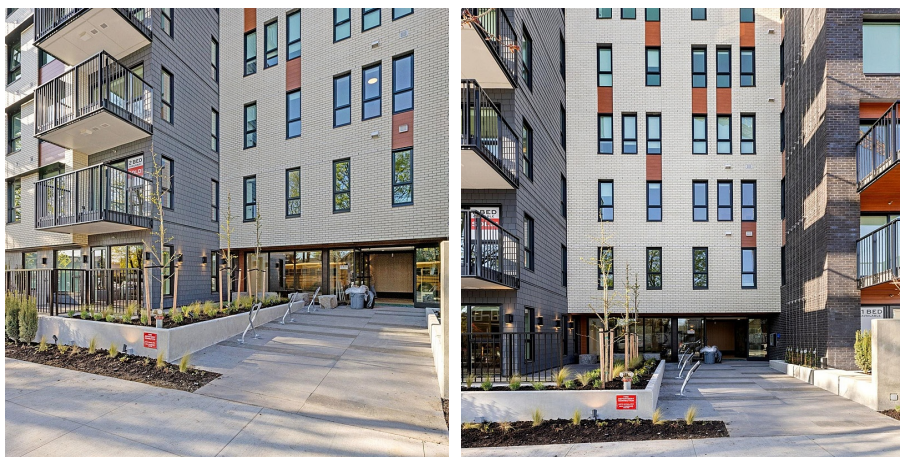
\$292.89 Maintenance Fees

## FEATURES

Year Built: 2024

Views: PANORAMIC CITY & GREENERY

Listed By: rennie & associates realty ltd.



**Salina Kai** PREC\*  
604.773.7013  
skai@rennie.com  
rennie.com/salinakai



**Danny Chow** PREC\*  
604.765.2469  
dchow@rennie.com  
rennie.com/dannychow

**rennie**