

# 11500 Railway Avenue, Richmond

\$1,599,000



Welcome to Shearwater, an exceptional offering from the esteemed Bricklane Developments. Meticulously designed 1/2 duplex residence featuring 3 bedrooms and 2.5 bathrooms spread across a spacious 1465 sq.ft floor plan. Discover a host of modern amenities including quartz countertops, A/C, Fisher Paykel appliances, elegant oak hardwood flooring, a charming fireplace, a luxurious en suite, radiant in-floor heating, and the added convenience of an attached double car garage. Indulge in the luxury of your own private outdoor sanctuary while relishing the proximity to the new Steveston community center and peaceful biking and walking trails just steps away. Experience the perfect blend of style and comfort at Shearwater. Nearby schools include Westward Elementary and Steveston-London Secondary.

## KEY INFORMATION

MLS® R2873744

Residential Attached

Westwind

3 Bedrooms

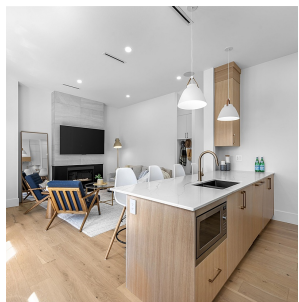
3 Bathrooms

1,465 SF

## FEATURES

Year Built: 2023

Listed By: Oakwyn Realty Ltd.



rennie