

2222 Petrie Court, Coquitlam

\$1,890,000



Incredible home located in a quiet cul-de-sac, boasting amazing views of Mount Baker, Fraser River, and Port Mann Bridge. The split-level design and vaulted ceilings make this grand home feel spacious and airy. Large picture windows offer unobstructed views of the surrounding beauty. With a huge sun deck that spans the width of the house, this is the perfect place to entertain your guests. Inside, there are large spaces that are perfect for hosting parties. Situated in a convenient location just a hop and a skip away from shopping, restaurants, schools, transit, and parks. This house is awaiting your special personal touches to make it a place you can call your own. Come view this beauty today, it's the home you've been looking for.

KEY INFORMATION

MLS® R2873836

Residential Detached

Cape Horn

4 Bedrooms

3 Bathrooms

3,580 SF

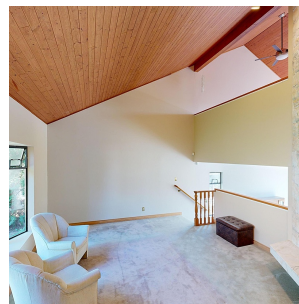
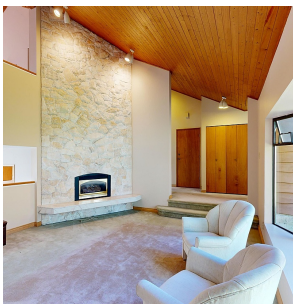
6,187 SF Lot

FEATURES

Year Built: 1986

Views: Mountains & River

Listed By: Sutton Group-West Coast Realty



rennie