

1506 210 Salter Street, New Westminster

\$978,000



The Peninsula, Port Royal - Fraser River panoramic views, 180 degrees, East to West from the large balcony. Two bedrooms, 2 bathrooms (1 large ensuite) in a beautifully appointed unit on the 15th floor. Forced air heat and cool from a heat pump system means comfortable living, year round. The kitchen is equipped with high end Gaggenau appliances. There is a large common area meeting/entertainment room, complete with full kitchen, high end furniture and a pool table. A gym overlooking the river, the large outdoor communal hot tub, a steam room and other beautifully manicured common outdoor spaces. A guest suite and media room are also available. A waterfall and concierge greets you at the entrance. Peaceful living on the river!

KEY INFORMATION

MLS® R2873951

Residential Attached

Queensborough

2 Bedrooms

2 Bathrooms

1,207 SF

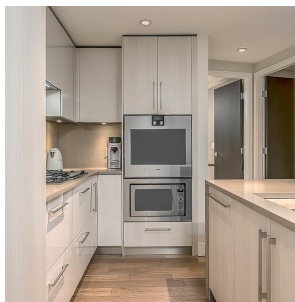
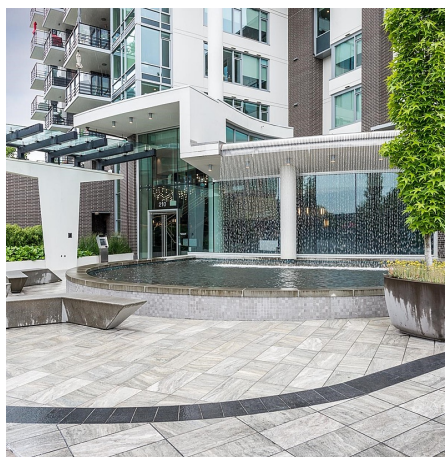
\$720.02 Maintenance Fees

FEATURES

Year Built: 2017

Views: Fraser River Waterfront Views

Listed By: Engel & Volkers Vancouver



rennie