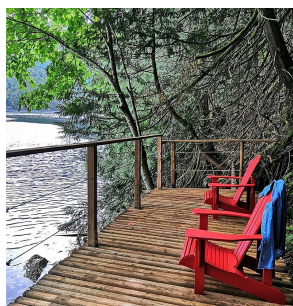
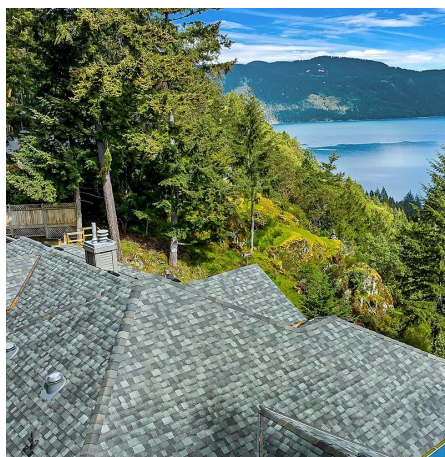
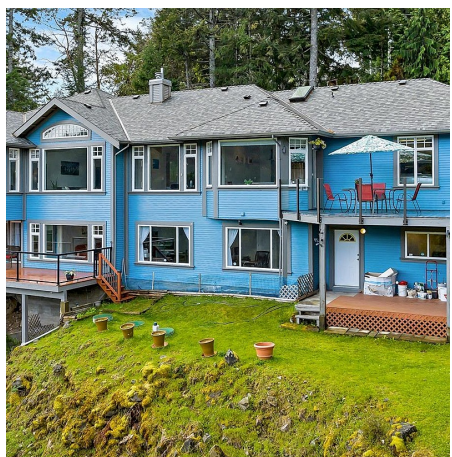


1156 Aspen Rd, Malahat

\$1,888,000



Unsurpassed views and privacy! Located in a quiet community just east of the Trans-Canada Highway, this 6 bedroom & 4 bath 3,700 square foot Custom 2001-built home features expansive & truly breathtaking views from nearly every room – across the inlet towards Gowlland Todd Provincial Park and up Finlayson Arm towards Squally Reach. The 3.46-acre property is high-bank waterfront with a private alpine trail down to the approx. 175' of ocean frontage with a nice sitting platform at water's edge. Extensive update list available with Floor Plans - no expense has been spared to create this fantastic mountainside villa! Living, Family and bedrooms are all oversized, plus a butler's pantry, vaulted ceilings, and lower-level walk-outs to big wrap-around sundecks! Pristine nature and amazing wildlife at your doorstep yet only 13 minutes to Millstream shopping and 5 minutes to Goldstream Park. Recent Upgrades include: Fibreglass shingle roof (2023), New Kitchen cabinets and counter-tops, New kitchen island with soft-close drawers, Complete re-build of both sun decks New Grand Front entry platform, Rheem Marathon 60-gallon Gas Hot Water heater with extended warranty, Central Vacuum with power head and attachments, Exterior paint, Fibreglass front door, Nearly all the interior and exterior light fixtures, New Septic Field (2017), New wooden staircase from driveway down to yard and trail area. The lower floor or a portion would be well-suited to AirBnb Rentals, a potential Secondary Suite or all kinds of home-based business! (id:56120)

KEY INFORMATION

MLS® 961296

Residential Detached

Malahat Proper

5 Bedrooms

4 Bathrooms

4,321 SF

rennie