

12 Flavelle Drive, Port Moody

\$2,125,000



A beautifully updated & perfectly located GREENBELT home in Port Moody's sought-after Barber Street area. This 6 bed + den, 4 bath, family home boasts 3900+ sqft of living space and is situated on a quiet street, backing onto a lush greenbelt, for ultimate privacy and views of nature. Featuring high-quality updates w/ an extensive list of renovations, incl kitchen, bathrooms, flooring, lighting, paint, windows & more. Seamless indoor-outdoor living, w/ a large patio directly off the kitchen that leads to your private backyard oasis. The basement features a bright & spacious mortgage helper suite w/ separate entry. Perfect for nature lovers, just steps from Flavelle Park and Bert Flinn Park. Minutes from Buntzen, Sasamat and the ocean, this home truly offers the best of Port Moody living.

KEY INFORMATION

MLS® R2875276

Residential Detached

Barber Street

6 Bedrooms

4 Bathrooms

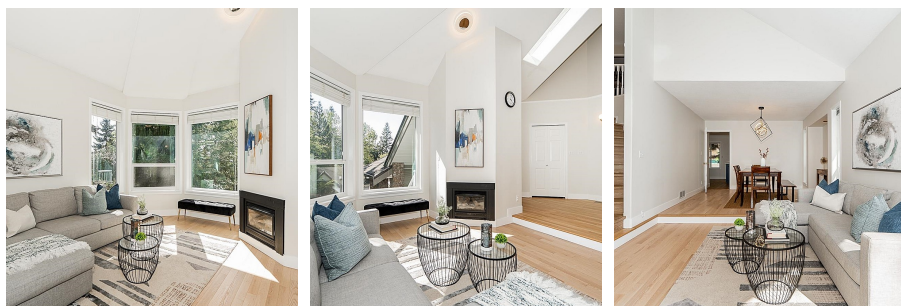
3,930 SF

6,347 SF Lot

FEATURES

Year Built: 1990

Listed By: Royal LePage Sterling Realty



rennie