

1110 2012 Fullerton Avenue, North Vancouver

\$470,000



Want city views? This south facing one bedroom in Woodcroft's Pemberton building has good views to the city skyline. Loads of sun and ambient light. Partial updates and well maintained by a caring tenant. Spacious floor plan perfect for two residents with "house size" furnishings. Great views to the nearly completed Woodcroft centre garden. Building has many upgrades including roof replacement, hot and cold water plumbing replacement, elevator rebuilding and common area upgrades. Swimming pool upgrades underway and paid by contingency funds. 24/7 manned security. Easy 10 minute walk to Park Royal. New Lions Gate Village development is a 5 minute walk with a community centre, shops and services, enhanced transit and a planned grocery store.

KEY INFORMATION

MLS® R2875313

Residential Attached

Pemberton

1 Bedroom

1 Bathroom

683 SF

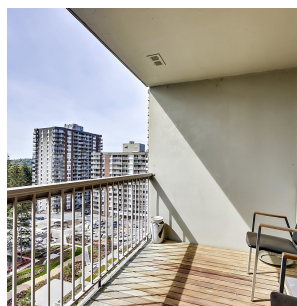
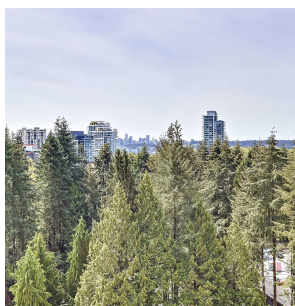
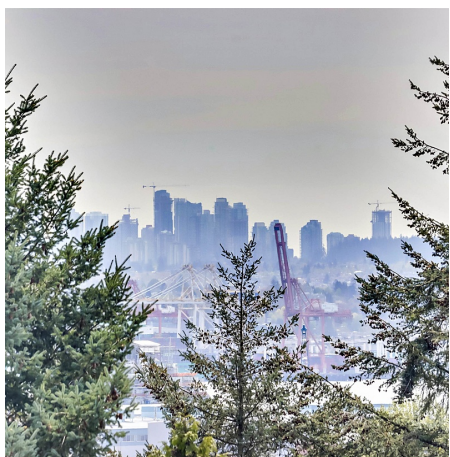
\$504.15 Maintenance Fees

FEATURES

Year Built: 1972

Views: City Views

Listed By: Royal LePage Sussex



rennie