

# 16 14541 Winter Crescent, Surrey

\$1,199,000



Perfectly positioned within the most stunning private enclave alongside the Nicomekl River, welcome to River & Pine in South Surrey. This modern day masterpiece offers the unique blend of contemporary architecture, coupled with unmatched tranquility. This mesmerizing 4 bedroom & 3.5 bathroom home is an entertainers dream; boasting a gourmet chef inspired kitchen, with stainless steel Samsung appliances - including gas stove range, porcelain tile backsplash, designer cabinets, under cabinet lighting, & matte black faucets, all of which are accentuated by exquisite quartz countertops throughout. Fully equipped with a 2 car garage (epoxy flooring - EV rough in), A/C and central vacuum; unrivalled access to HWY, an array of fantastic schools, and a number of amazing amenities. Call today.

## KEY INFORMATION

MLS® R2874683

Residential Attached

King George Corridor

4 Bedrooms

4 Bathrooms

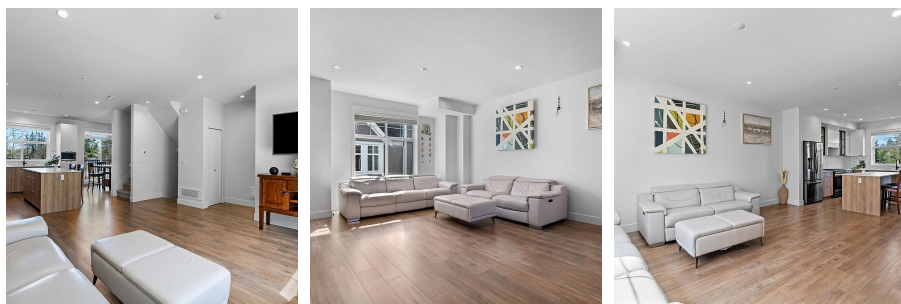
1,959 SF

## FEATURES

Year Built: 2021

Views: Nicomekl River Park

Listed By: Century 21 Coastal Realty Ltd.



rennie