

906 660 Nootka Way, Port Moody

\$970,000



Stunning NW outlook of mountains and peek-a-boo ocean from this over 1000 sqft 2 Bedroom and 2 bathroom at Polygon's Nahanie. The floor to ceiling windows provide natural light and treed views. The open concept kitchen features granite counters, stainless steel appliances, and a gas cooktop. Unwind in the cozy living area by the fireplace or step onto the generous outdoor space to soak in the scenery. Access to the 15,000 sqft Canoe Club featuring swimming pool, hot tub, gym, tennis court, party room w/kitchen, and media room. Conveniently located just steps away from the renowned Rocky Point Park, Brewers Row, Inlet Centre Station, and the vibrant shops and eateries of Suter Brook and Newport Village in Port Moody

KEY INFORMATION

MLS® R2875758

Residential Attached

Port Moody Centre

2 Bedrooms

2 Bathrooms

1,157 SF

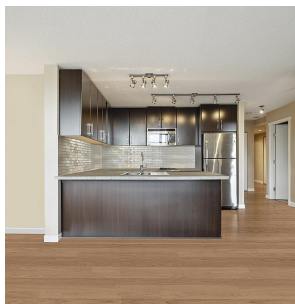
\$579.69 Maintenance Fees

FEATURES

Year Built: 2009

Views: Mountain & Peek-a-boo Ocean

Listed By: rennie & associates realty ltd.



Natalie Genest PREC*
604.928.7330
ngenest@rennie.com
rennie.com/nataliegenest

rennie