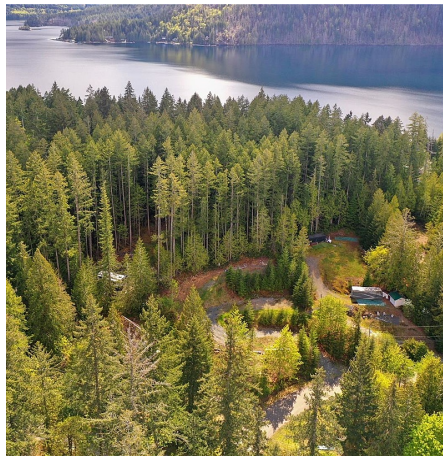
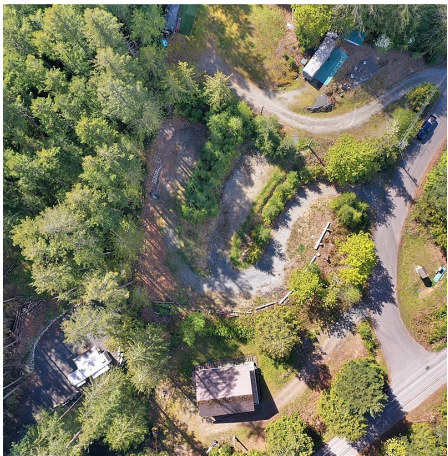


10320 Griffin Pl, Port Alberni

\$399,000



Experience life at Sproat Lake on this fully serviced half-acre lot, conveniently located just across the street from access to Sproat Lake. Envision crafting your dream home, or perfect summer getaway, in this serene location. With nearby lake access, this residential bare land strata lot boasts essential amenities including a BC Hydro power connection, a drilled well, and access to a shared septic system within the strata. Adventure awaits in this vibrant neighborhood, with scenic walking trails, a 2 minute drive to Sproat Lake Landing, and nearby lake access. Embrace the harmonious fusion of nature and convenience – your ultimate gateway to lakeside living awaits! (id:56120)

KEY INFORMATION

MLS® 962079

Land Only

BC

0 Bedrooms

0 Bathrooms

0 SF

21,344 SF Lot

FEATURES

Listed By: rennie & associates realty ltd.



Amy Francoeur PREC*
250.857.6704
afrancoeur@rennie.com
rennie.com/amyfrancoeur

rennie