

40198 Kintyre Drive, Squamish

\$1,789,000



Don't miss this rare opportunity to own a piece of paradise on this highly desirable street. Located on the Kintyre Bench on a 20,000 Sq. foot lot, this home is a perfect oasis for any busy family or outdoor enthusiasts. As soon as you walk in you will be captivated by the character of this home with the vaulted ceilings, updated kitchen (s/s appliances, quartz countertops and a wine fridge), multiple seating areas/hang out spaces and loads of storage.(637 sq ft crawlspace) Whether you are entertaining in the backyard or simply soaking in the serene surroundings, the possibilities are endless in your private outdoor sanctuary. Walking distance to elementary school, public transportation and of course a vast network of hiking and biking trails right outside your front door.

KEY INFORMATION

MLS® R2877170

Residential Detached

Garibaldi Highlands

4 Bedrooms

3 Bathrooms

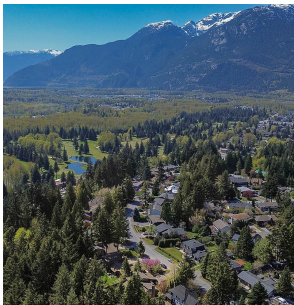
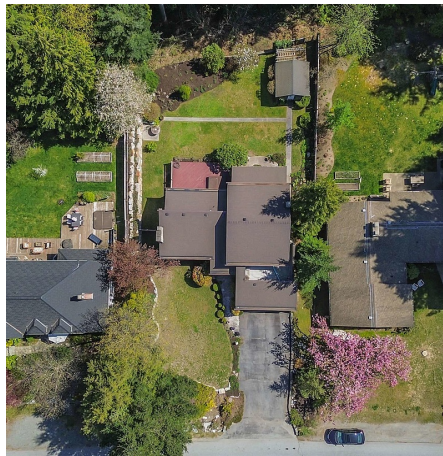
2,330 SF

20,000 SF Lot

FEATURES

Year Built: 1981

Listed By: rennie & associates realty ltd.



Jeevan Gill
604.617.2159
jgill@rennie.com
rennie.com/jeevangill

rennie