

2606 Sw Marine Drive, Vancouver

\$19,800,000



Prestigious and elegant villa located in the heart of the Vancouver westside overlooking the stunning Fraser River and unobstructed McLeery Golf Court. A contemporary and refined design, associated with the use of the most modern technologies, and the extraordinary ability to choose materials that are precious, but at the same time functional and never excessive. Residents live life to the fullest surrounded by endless privileges, stunning views and timeless design. If you are looking for a bespoke home that is simply outstanding, get in touch with your realtor today to arrange a private viewing.

KEY INFORMATION

MLS® R2878152

Residential Detached

Southlands

5 Bedrooms

7 Bathrooms

13,272 SF

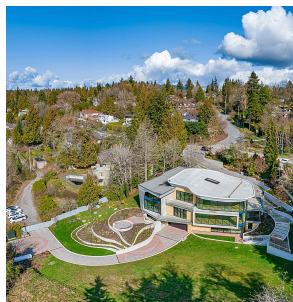
41,454 SF Lot

FEATURES

Year Built: 2018

Views: GOLF COURT

Listed By: Interlink Realty



rennie