


5355 Mckinnon Street, Vancouver

\$4,000,000



LAND ASSEMBLY

18 PROPERTIES
60,500 SF OF LAND

5300 Block of McHardy & McKinnon

This graphic features a stylized 'Y' logo in a circle, a map of the Joyce-Collingwood station area with concentric circles representing different tiers, and an aerial photograph of the residential neighborhood. The text 'LAND ASSEMBLY' is prominently displayed at the top, and '18 PROPERTIES' and '60,500 SF OF LAND' are shown in a gold box. The address '5300 Block of McHardy & McKinnon' is at the bottom.

Land Assembly Alert! Attention Developers and Investors! Unprecedented opportunity to develop the entire 5300 block of McHardy Street AND McKinnon St with an impressive nearly 320 feet of frontage and 100 feet of depth. This land assembly consists of 10 Homes on McHardy st, and upto 8 homes on McKinnon st, for a total lot size of roughly 60,500 sf of land. This property is part of the Transit-Oriented Development Area around Joyce-Collingwood Station, within the 800-meter tier, and currently zoned for a 3.0 Floor Space Ratio (FSR). Located merely steps from the Joyce-Collingwood Skytrain station, it offers remarkable convenience, providing future residents with easy access to a plethora of local amenities. Additionally, its proximity to a park enhances its appeal with green space nearby.

KEY INFORMATION

MLS® R2878492

Residential Detached

Collingwood

6 Bedrooms

2 Bathrooms

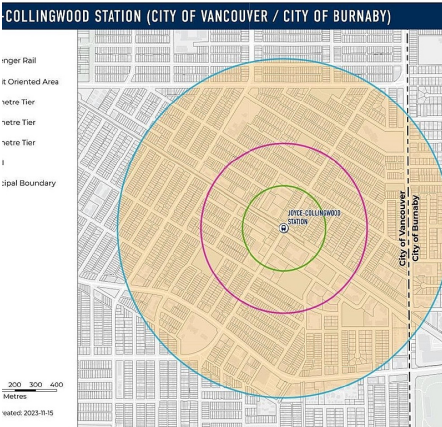
1,910 SF

3,267 SF Lot

FEATURES

Year Built: 1957

Listed By: eXp Realty

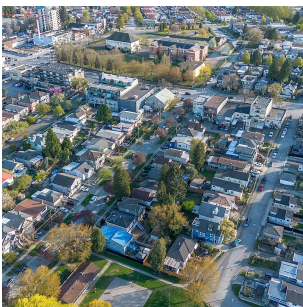
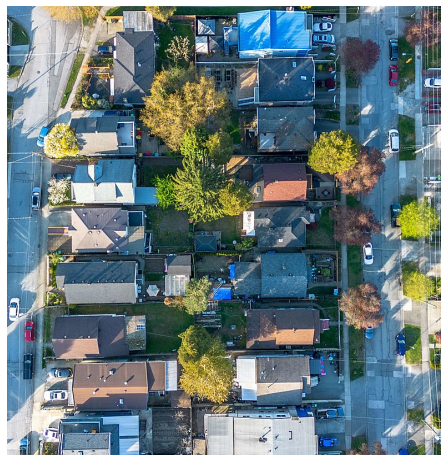


COLLINGWOOD STATION (CITY OF VANCOUVER / CITY OF BURNABY)

Transit Oriented Area
800m Tier
400m Tier
200m Tier
100m Tier
Municipal Boundary

300 300 400
Metres
dated: 2023-11-15

This map shows the Joyce-Collingwood station area with concentric circles representing different tiers. The text 'COLLINGWOOD STATION (CITY OF VANCOUVER / CITY OF BURNABY)' is at the top. The legend on the left lists 'Transit Oriented Area', '800m Tier', '400m Tier', '200m Tier', '100m Tier', and 'Municipal Boundary'. A scale bar and date are at the bottom.



rennie