

# 3701 Saanich Rd, Saanich

\$1,029,000



Investment Opportunity: Revenue Property or Family Home? You Decide! - Nestled near Swan Lake, this timeless home has traditional appeal and versatility. The upper main floor boasts two spacious bedrooms, a full bath, and a generous living area complete with charming coved ceilings, decorative fireplace and access to a sunny deck. Downstairs, a 2 bedroom inlaw suite with a separate entrance lends itself to extended family, teens or guests. Easily converted back to 1 full home. Exterior and interior have been recently painted and the mature landscaping with lovely stonework make this property a delight. Easy potential for ground level entrance for easy mobility. Lots of parking! Bring your vehicles, EVs & toys! Just steps away from Lochside Trail & Tolmie Park for fun family times with the kids! Conveniently located near Uptown, shopping, schools and all amenities of Victoria & Saanich. Call to book your appointment to view this cornerstone property, Today! (id:56120)

## KEY INFORMATION

MLS® 962550

Residential Detached

Quadra

4 Bedrooms

2 Bathrooms

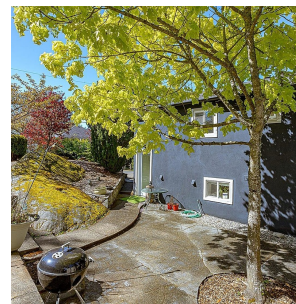
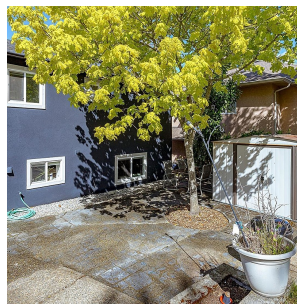
1,834 SF

6,049 SF Lot

## FEATURES

Year Built: 1955

Listed By: Pemberton Holmes - Cloverdale



rennie