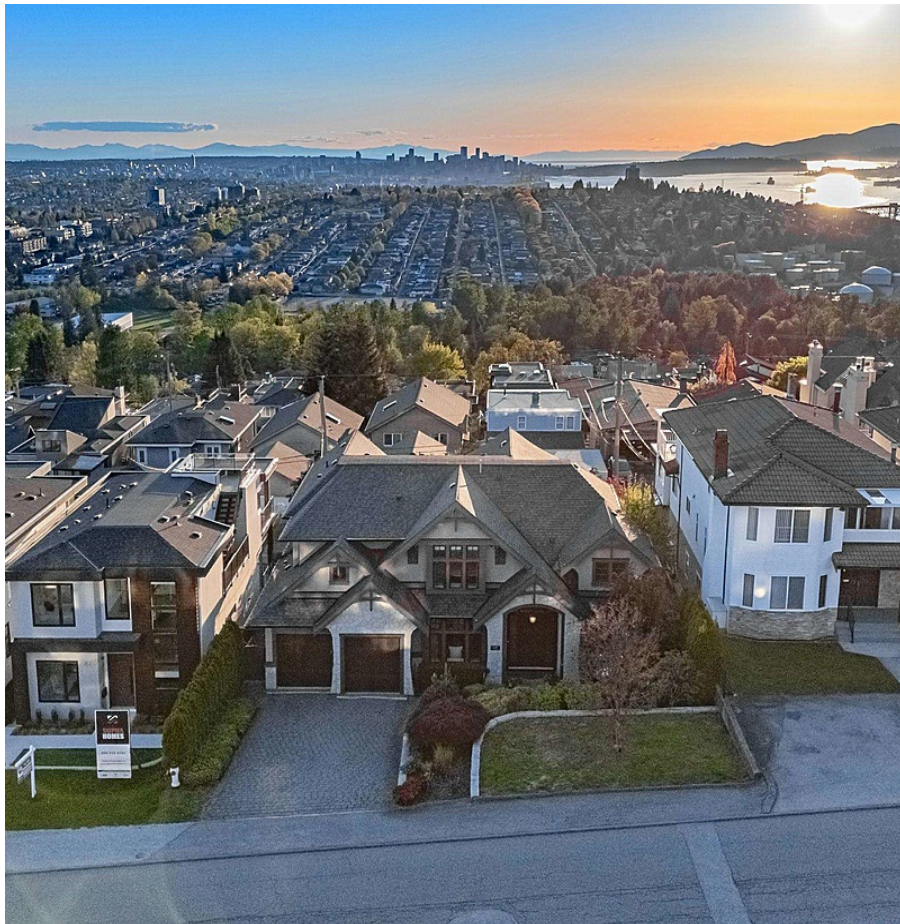


125 N Glynde Avenue, Burnaby

\$4,388,000



Welcome to this STUNNING meticulously crafted with Breathtaking OCEAN,CITY,and MOUNTAIN VIEWS! This amazing home sits on a 66x122ft lot with a fully fenced mature landscaping & large outdoor patio.Main floor boasts gorgeous hardwood floors throughout with an amazing chef-inspired kitchen,bedroom,dining and living space! The above features 4 large bedrooms and 3 bathrooms perfect for growing families. The massive walking closet, luxurious bathroom and unbeatable view from the master bedroom are a must-see! Below features a massive recreation room with professional bar,media room,bedroom, and a full bathroom with separate entry.Two-car attached garage with lots parking in front and additional parking in back with secured gate and lane access.Call for private viewing of your dream home!

KEY INFORMATION

MLS® R2879324

Residential Detached

Capitol Hill

6 Bedrooms

5 Bathrooms

4,852 SF

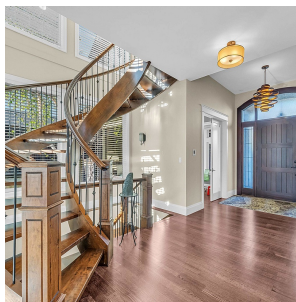
8,052 SF Lot

FEATURES

Year Built: 2010

Views: MOUNTAIN, WATER, AND CITY VIEW

Listed By: eXp Realty



rennie