

# 1002 9633 Manchester Drive, Burnaby

\$679,000



Renovated spacious 2 bed, 2 bath in a concrete high-rise condo located by Lougheed Mall. Corner unit with functional 957 sqft floor plan, south facing with city and garden view. Stainless steel appliances, countertops, and modern cabinetry. New Paint / modern-style laminate floor / Kitchen Sink, and New bathrooms (Renovated in April 2024). Bright and spacious master bedroom with 4 pce ensuite. Outdoor swimming pool & hot tub, gym, sauna, and tennis courts. Walking distance to Lougheed Skytrain Station, Lougheed Mall, and H-mart. 15-minute drive to SFU and many restaurants nearby. Quick access to HWY 1.

## KEY INFORMATION

MLS® R2880260

Residential Attached

Cariboo

2 Bedrooms

2 Bathrooms

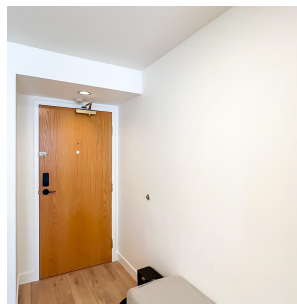
957 SF

\$400.19 Maintenance Fees

## FEATURES

Year Built: 1994

Listed By: Royal First Realty



rennie