

# 207 2647 Graham St, Victoria

\$485,000



Embrace urban living at its finest with this private 2-bedroom corner unit, ideally situated in the heart of a vibrant neighbourhood. Surrounded by lush foliage, both bedrooms offer tranquil views, ensuring serenity amidst city life. Experience the convenience of in-suite laundry and the security of underground parking, while nearby amenities and walkability enhance your lifestyle. With easy access to bustling shops, trendy cafes, and recreational spots, this meticulously cared-for property provides the perfect blend of comfort and connectivity for modern living. Situated on a designated bike route with bike storage for your convenience. (id:56120)

## KEY INFORMATION

MLS® 963165

Residential Attached

Hillside

2 Bedrooms

1 Bathroom

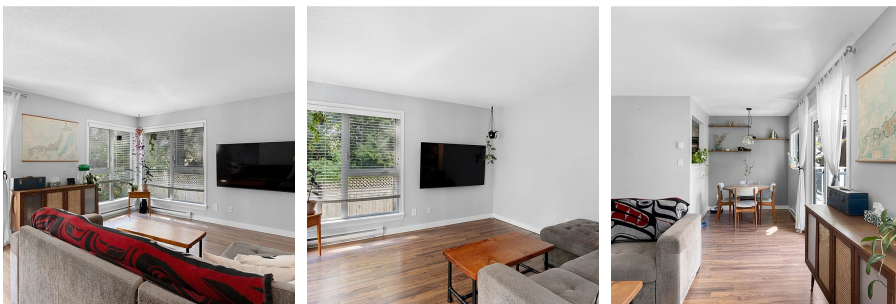
840 SF

840 SF Lot

## FEATURES

Year Built: 1991

Listed By: Newport Realty Ltd.



rennie