

548 Dalton Drive, Mayne Island

\$299,000



This property offers the convenience of electricity and community water connections at the lot line. Although there is no septic installed, the zoning allows for a single family dwelling with the option of a secondary suite. You can also construct two accessory buildings on the property. The location is highly advantageous, being just a 1-minute drive or a 10-minute walk away from the Village Bay Ferry Terminal and a 4-minute drive from Mayne Island's brewery district. Whether you choose to build a new home and revel in the serenity, or utilize it as a cash flow bnb investment due to its proximity to other vacation rentals, this property offers great potential. Alternatively, you can hold the land as vacant, requiring minimal maintenance, and enjoy the potential of appreciation.

KEY INFORMATION

MLS® R2881483

Land Only

Gulf Islands Other

0 Bedrooms

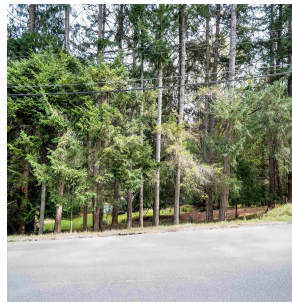
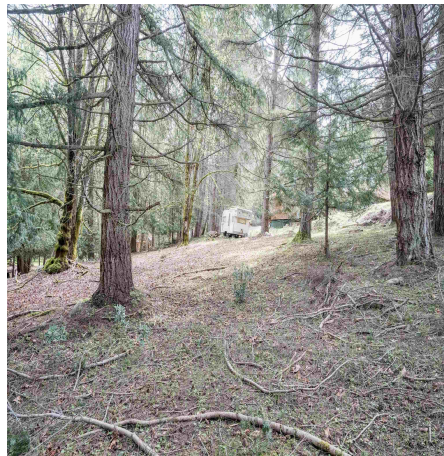
0 Bathrooms

0 SF

15,246 SF Lot

FEATURES

Listed By: Multiple Realty Ltd.



rennie