

7251 Spruce Grove Way, Whistler

\$3,799,900



Gorgeous 2775 square foot, 4 bdrm, 2.5 bath home ideal for family living or weekend getaways. This home is in the much-desired Spruce Grove area with a large sundeck with a hottub overlooking Fitzsimmons Creek & surrounding green space. Fabulous views from the generous sundeck facing Blackcomb Mountain residing off the spacious great room with a feature floor to ceiling wood burning fireplace for that added warmth and ambience of mountain living. Lots of added features including wood floors, vaulted log accents plus lots of additional room for year-round adventure equipment. 500 Sq Ft. Fully contained & private bachelor suite as shown on FP, for added revenue. The lot is a very generous 5694 square feet that is easily maintained. Double car garage & plenty of parking on the driveway.

KEY INFORMATION

MLS® R2881448

Residential Detached

Spruce Grove

4 Bedrooms

3 Bathrooms

2,775 SF

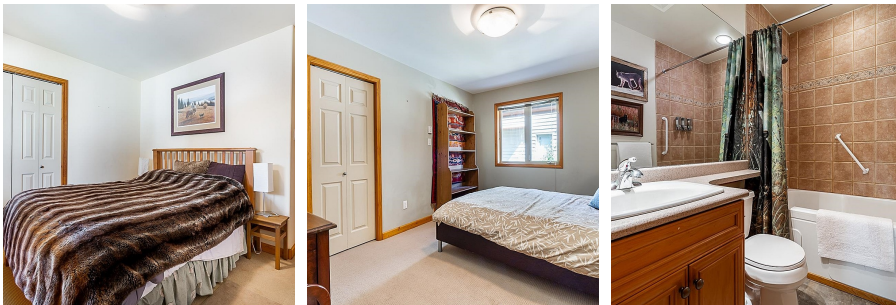
5,694 SF Lot

FEATURES

Year Built: 2000

Views: BLACKCOMB MTN & SINGING PASS

Listed By: RE/MAX 2000 Realty



rennie