

3212 10448 University Drive, Surrey

\$669,000



Experience urban luxury on the 32nd floor with breathtaking mountain and city views in this 2-bed, 1-bath condo. Enjoy convenience with underground parking, storage, and visitor parking with EV charging. Indulge in over 23,000 sqft of amenities including a fitness center, heated pool, meeting spaces, and game room. Located near a sky train station, Surrey Central Mall, SFU, KPU, and upscale dining, this condo offers unparalleled accessibility and sophistication.

KEY INFORMATION

MLS® R2881537

Residential Attached

Whalley

2 Bedrooms

1 Bathroom

686 SF

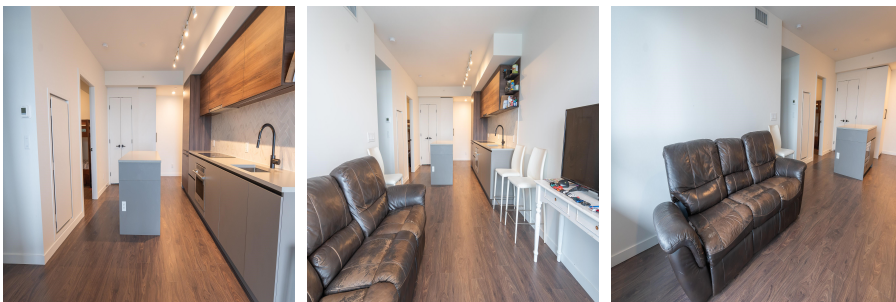
\$391.54 Maintenance Fees

FEATURES

Year Built: 2023

Views: Mountain,River,City

Listed By: Century 21 Creekside Realty Ltd.



rennie