

# 497 Abbott Road, Mayne Island

\$229,000



Nestled at the end of a tranquil cul-de-sac, this charming property offers a peaceful retreat in a quiet area. Enjoy the convenience of walking to the beautiful Bennett Bay Beach for a day of relaxation or dining at the nearby Bennett Bay Bistro. Water & Hydro at the lot line. Sitting on a .41-acre lot, this location is perfect for those seeking a blend of serene surroundings and easy accessibility to local amenities. Experience the best of coastal living in this idyllic setting. Come Feel the Magic!

## KEY INFORMATION

MLS® R2882974

Land Only

Mayne Island

0 Bedrooms

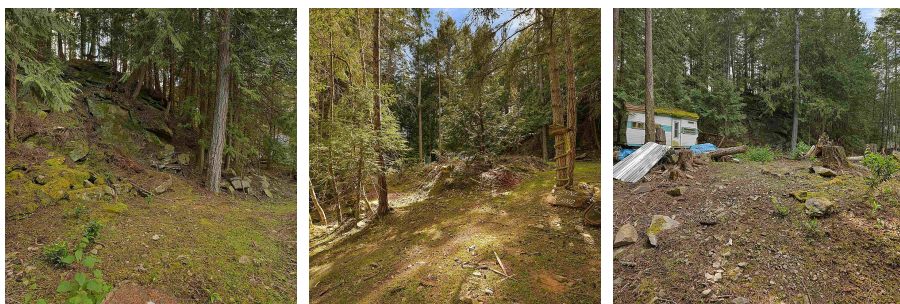
0 Bathrooms

0 SF

17,859 SF Lot

## FEATURES

Listed By: RE/MAX Mayne-Pender



rennie