

1780 Pitt River Road, Port Coquitlam

\$1,275,000



Great opportunity with this 8,300 foot VIEW LOT with lane access. What will you build? Option for laneway house or duplex with City approval. Three bedroom house requires a roof and some repair. Convenient location that is close to the schools, parks and transit with easy access for commuters.

KEY INFORMATION

MLS® R2885693

Residential Detached

Mary Hill

3 Bedrooms

1 Bathroom

1,055 SF

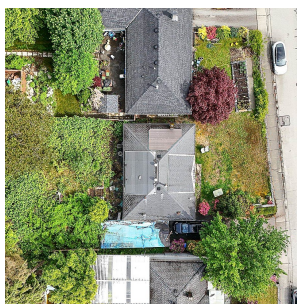
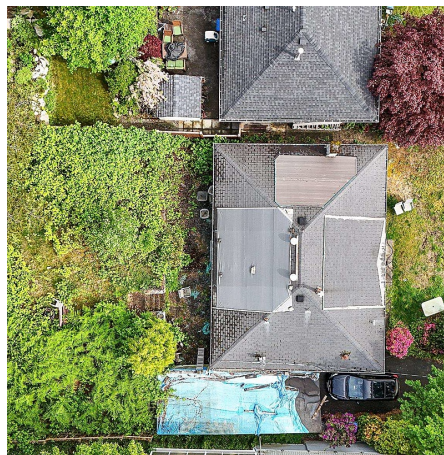
8,340 SF Lot

FEATURES

Year Built: 1958

Views: MOUNTAINS

Listed By: Royal LePage Sterling Realty



rennie