

# 410 2000 West Park Lane, View Royal

\$739,900



SHOW CENTER OPEN SAT/SUN 12-3.

Lakeside living with expansive views! Welcome to West Park One, an exclusive collection of 48 homes built by award winning local builder Homewood Constructors Ltd. Steps away from Thetis Lake & minutes from downtown Victoria. Contemporary, city-inspired design. 8 unique floorplans from 600sq' 1 bed to 1,125sq' 2 bed + den homes. Polished interiors available in 2 colour palettes, wide plank laminate floors, premium wood veneer cabinets, quartz countertops, ventilation system, exceptional sound insulation & energy-efficient Samsung appliances. Bathrooms w/ designer tiles, elegant fixtures & roomy walk-in showers with rain shower heads. 9-foot ceilings, custom open-island or galley-style kitchens are designed for easy use and entertaining. Large private patios on the ground floor & spacious balconies on upper-level homes. Live in tune with nature, breathe fresh air, hike through lush forests & go for long walks along the coast. Pre-construction pricing. (id:56120)



## KEY INFORMATION

MLS® 965173

Residential Attached

Prior Lake

2 Bedrooms

2 Bathrooms

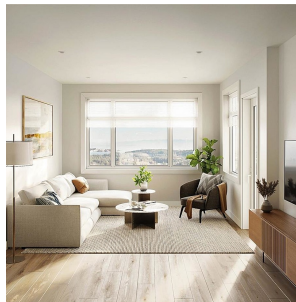
975 SF

859 SF Lot

## FEATURES

Year Built: 2025

Listed By: NAI Commercial (Victoria) Inc.



rennie