

# 907 6611 Southoaks Crescent, Burnaby

\$749,000



Experience the pinnacle of urban living at Gemini I, a stunning 21-storey high-rise located on Southoaks Cr near Kingsway in Burnaby's Highgate area. It combines luxury, convenience, and breathtaking views to offer an exceptional living experience. Step into your 2 bd and 2 bath new home with spacious floor plan, gas fireplace, and expansive windows and balcony that frame panoramic vistas of the city and beyond. Amenities including hot tub, sauna, steam room, and exercise room. The beautifully landscaped grounds and secure underground parking add to the convenience and comfort of your urban sanctuary. Located just a short walk from the SkyTrain and with direct access to major route. Gemini I is not just a place to live, but a lifestyle choice.

## KEY INFORMATION

MLS® R2887163

Residential Attached

Highgate

2 Bedrooms

2 Bathrooms

1,072 SF

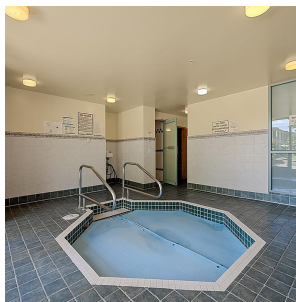
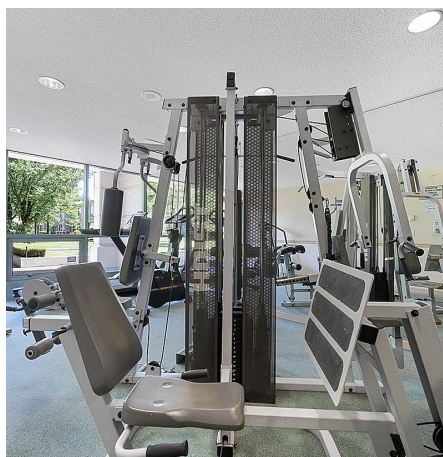
\$495.16 Maintenance Fees

## FEATURES

Year Built: 1999

Views: Mountain, Cityview

Listed By: rennie & associates realty ltd.



**Eaton Shi** PREC\*  
778.829.0978  
eshi@rennie.com  
rennie.com/eatonshi

**rennie**