

# 5 Erskine Lane, View Royal

\$5,299,980



Attention Developers! We're pleased to offer the last large development site for sale on Erskine Lane that's perched high at the end of the road with southerly views overlooking View Royal to the Olympic Mountains. This 47,000 square foot property is designated "Intensive Mixed Use" in the View Royal Official Community Plan, which foresees commercial and residential uses in buildings up to 5 Storeys with a maximum 2.5:1.0 FSR. This site enjoys the best location and outlook for exclusive ocean view apartments on every level. Municipal infrastructure upgrades are underway to service similar development projects on Erskine Lane. Two rental houses provide holding income while development plans are formulated. Don't miss this exciting opportunity to build a true landmark building in View Royal! Please DO NOT walk the property without a confirmed appointment! (id:56120)

## KEY INFORMATION

MLS® 965379

Land Only

Hospital

0 Bedrooms

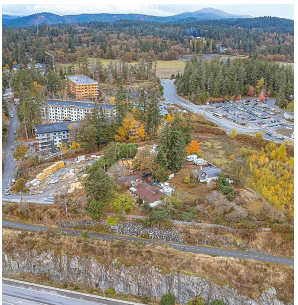
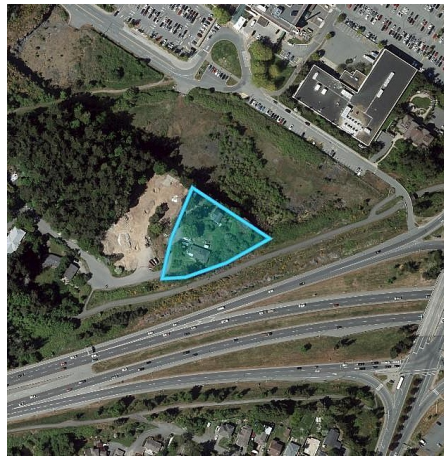
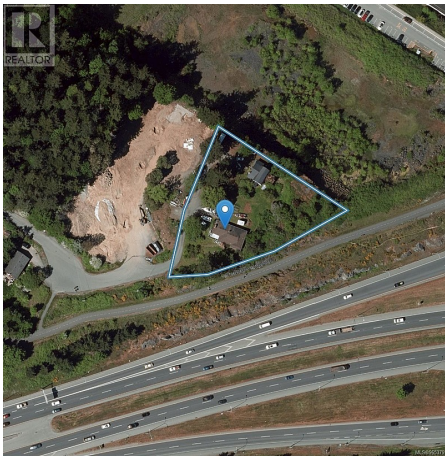
0 Bathrooms

0 SF

47,044 SF Lot

## FEATURES

Listed By: Sutton Group West Coast Realty



rennie