

3304 889 Pacific Street, Vancouver

\$1,529,900



THE PACIFIC, a luxury residential tower designed of TIMELESS ELEGANCE, is located in Downtown Vancouver. This well-appointed NE corner home offers 2 Bed, 2 Full Bath & Flex, is only 3 floors from the penthouse level with spectacular city and False Creek views. Interiors have been meticulously planned for ultimate form & function. Italian millwork by SNAIDERO is custom-configured for every kitchen, outfitted with high end appliances from SUBZERO, WOLF & MIELE. The architecture reflects a desire for quiet sophistication that commands attention without extravagance. A balcony is fitted with natural gas for bbq. Amenities incl. 24-hour Concierge, Fitness Centre, Lounge, & landscaped & illuminated outdoor terrace for cooking & dining. Includes 1 parking & 1 storage locker. 5% GST already paid!

KEY INFORMATION

MLS® R2888663

Residential Attached

Downtown

2 Bedrooms

2 Bathrooms

1,044 SF

\$750.99 Maintenance Fees

FEATURES

Year Built: 2021

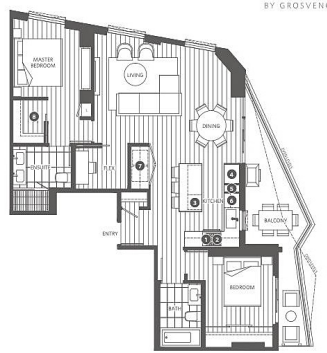
Views: city, skyline, false creek

Listed By: rennie & associates realty ltd.



1 B7 | 2 BED + 2 BATH + FLEX
JR: 1,044 SF
GR: 108 SF (GOOD)
148 SF (EVNO)

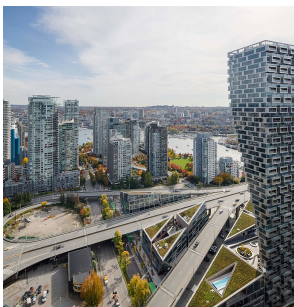
as cooktop by Wolf
integrated hood fan by Faber
integrated wall oven by Wolf
dishwasher by Wolf
integrated refrigerator with
r drawers by Sub-Zero
8 height pull-out pantry by
BDO
integrated dishwasher by Miele
efficiency washer and dryer
aka (side by side)
in closet by Snaidero



THE PACIFIC
BY GROSVENOR

BY TENOR

RESIDENTIAL UNIT TO BE BUILT AND OPERATED IN ACCORDANCE WITH THE BUILDING REGULATIONS, LOCAL, PROVINCIAL, FEDERAL, AND INTERNATIONAL STANDARDS AND ALL APPLICABLE CODES AND REGULATIONS.



Phil Chang PREC*
604.754.6678
pchang@rennie.com
rennie.com/philchang

rennie