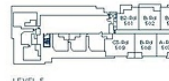
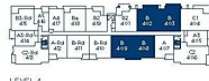
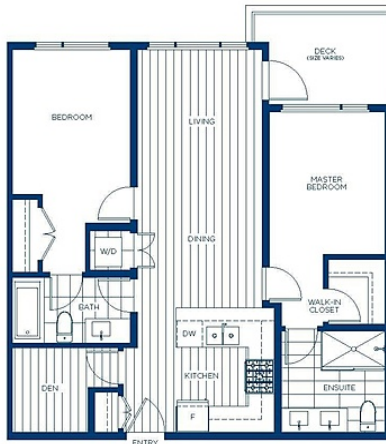


# 311 4788 Hastings Street, Burnaby

\$875,000



Plan  
2 Bedroom +  
Interior : 8  
Exterior : 77-4



Developer reserves the right to make changes, modifications or substitutions to the building design, elevations, dimensions, specifications, and floor plans should they be necessary. Final floor plans may be a mirror image of the floor plans shown. Square footage m sizes are based on the preliminary survey measurements, however the exterior square footage is based on the architectural plans. All sizes and dimensions are approximate and actual square footages may vary from the final survey and architectural drawings. E&O.E

VALEO -CONCRETE condos in the heart of Burnaby Heights! Streetside Developments has created a limited collection of exquisite homes built to exacting standards. South Facing. Thoughtfully designed large 2 bdrm+den, quartz countertops, laminate flooring throughout & energy efficient self-control VRF system for heating/cooling for maximum comfort in your own home. 1 parking & 1 storage locker, Entertain on the rooftop terrace w/ gas BBQ and picnic area w/spectacular mountain views. Estimated completion Nov 2024 - Feb 2025

## KEY INFORMATION

MLS® R2888670

Residential Attached

Capitol Hill

2 Bedrooms

2 Bathrooms

854 SF

\$0.00 Maintenance Fees

## FEATURES

Year Built: 2024

Listed By: Pacific Evergreen Realty Ltd.

