

625 E 44th Avenue, Vancouver

\$1,850,000



Investors, Builders & possibly Renovators! 122' x 33' lot with lane access on which sits a large house with multiple units. Excellent location in the "Fraser" district near 41st Ave with a 94 walk score! A vibrant area with a growing community in a family friendly neighbourhood with lots of new development in the area. Very close to John Oliver Secondary & Memorial South Park. Do a major renovation to the multiple units or build brand new. RM-2 City of Vancouver Zoning. Buyers to confirm all development or renovation potential with the City of Vancouver.

KEY INFORMATION

MLS® R2888890

Residential Detached

Fraser

7 Bedrooms

6 Bathrooms

3,661 SF

4,026 SF Lot

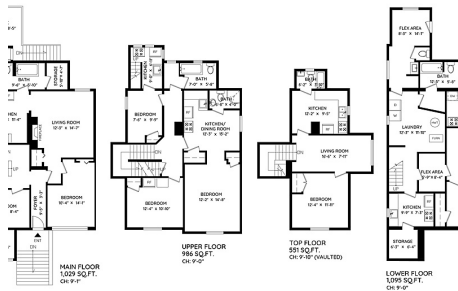
FEATURES

Year Built: 1911

Listed By: Sutton Group-West Coast Realty (Surrey/24)

44TH AVENUE EAST
VANCOUVER, BC

MAIN	1029 SQ.FT.	DECK
UPPER	986 SQ.FT.	
TOP	551 SQ.FT.	
LOWER	1095 SQ.FT.	
TOTAL	3,661 SQ.FT.	



k

rennie