

# 605 209 E 7th Avenue, Vancouver

\$1,220,000



Gorgeous 2-bed plus Flex unit at upscale Ellsworth by Chard. North East-facing, offering city and mountain vistas. Boasts in-suite heating/cooling, custom millwork, integrated kitchen, quartz countertops, washer/dryer, spa-like bath. Enjoy rooftop terrace amenities with BBQs, fire pit, and garden plots. Convenient locale near community centre, shops, chic eateries, transit, and upcoming skytrain and future St Paul's hospital.

## KEY INFORMATION

MLS® R2889147

Residential Attached

Mount Pleasant

2 Bedrooms

2 Bathrooms

925 SF

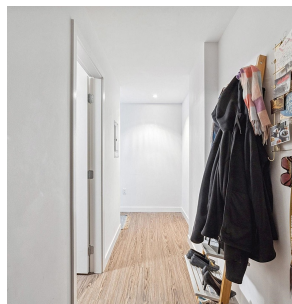
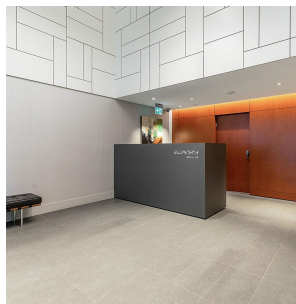
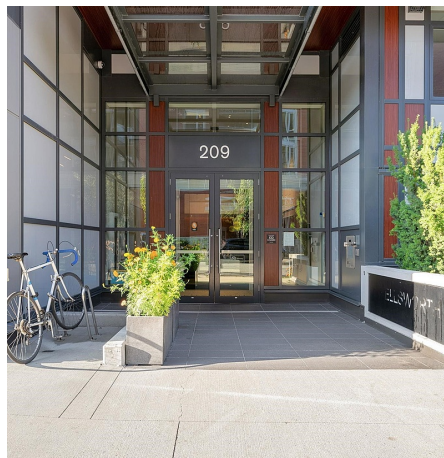
\$621.74 Maintenance Fees

## FEATURES

Year Built: 2018

Views: city mountain view

Listed By: rennie & associates realty ltd.



**Biannca Gurniak**  
604.813.6605  
bgurniak@rennie.com  
rennie.com/bianncagurniak



**Miguel Faulkner**  
778.866.2260  
mfaulkner@rennie.com  
rennie.com/miguelfaulkner

**rennie**