

209 168 E 35th Avenue, Vancouver

\$1,108,000



Welcome to James Walk, an exclusive addition to Main Street's vibrant community, nestled at the base of Queen Elizabeth Park. Discover a rare gem within this exceptional building - a beautiful 2-bedroom unit with a versatile flex space. This residence features an outstanding layout but also provides serene park views. The master bedroom's separation from the other bedrooms ensures privacy and tranquility. The kitchen, both spacious and functional, caters to culinary enthusiasts and extends to a covered balcony where you can savour your picturesque surroundings. With high ceilings and expansive windows, natural light bathes this home, creating a welcoming atmosphere. You're just a brief walk from Queen Elizabeth Park, the Hillcrest Community Centre and Main St shops.

KEY INFORMATION

MLS® R2889169

Residential Attached

Main

2 Bedrooms

2 Bathrooms

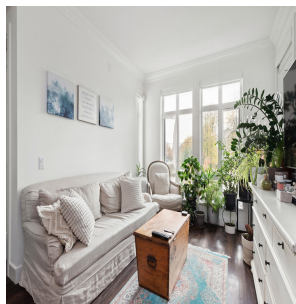
838 SF

\$376.32 Maintenance Fees

FEATURES

Year Built: 2017

Listed By: rennie & associates realty ltd.



Biannca Gurniak
604.813.6605
bgurniak@rennie.com
rennie.com/bianncagurniak



Miguel Faulkner
778.866.2260
mfaulkner@rennie.com
rennie.com/miguelfaulkner

rennie