

Lot 3 Goldstream Heights Dr, Shawnigan Lake

\$1,150,000



This exceptional property boasts an unheard-of 24+ acres of private land, promising an abundance of space and boundless potential. Situated in the established Goldstream Heights perched over the Saanich Inlet with stunning ocean and mountain views as your outlook. Bordering Shawnigan Lake and Wigglesworth creates the ideal location for the outdoor enthusiast or commuter with easy access to the Malahat for a quick drive into town. Your journey starts with the convenience of an established driveway and drilled well, ready to develop and bring your vision to life. Prime opportunity for building your dream home with your own private park-life parcel of land or subdivision potential for investment or redevelopment, this rare acreage has it all. (id:56120)

KEY INFORMATION

MLS® 965797

Land Only

Malahat Proper

0 Bedrooms

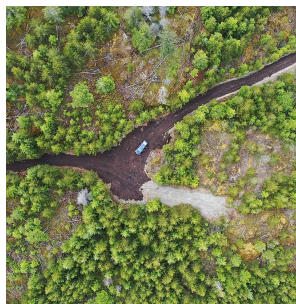
0 Bathrooms

0 SF

1,076,369 SF Lot

FEATURES

Listed By: Coldwell Banker Oceanside Real Estate



rennie