

# 9531 Steveston Highway, Richmond

\$1,699,000



Investor & Builder's Alert! This is a perfect property for future to multi-family or a spacious family home in desirable south arm neighborhood. lot 61 x 123, total 7529 sqft, 3 bedroom and one full bath, large desk and garden back yard. Easy and stable rental return. Top school catchment McRoberts Secondary and Whiteside Elementary (French Immersion). Walking distance to Ironwood Mall, local shops and restaurants, Canadian Tire, London Drugs, The Keg, Tim Horton's, McDonalds. South Arm Community Centre, International Buddhist Temple, Broadmoor Shopping Centre. Easy Access to Vancouver and HWY 99.

## KEY INFORMATION

MLS® R2889873

Residential Detached

South Arm

3 Bedrooms

1 Bathroom

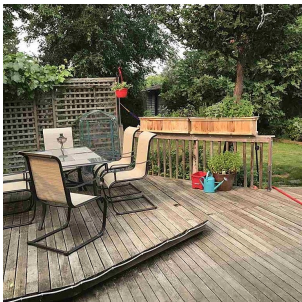
916 SF

7,529 SF Lot

## FEATURES

Year Built: 1970

Listed By: Homeland Realty



rennie