

16 8433 Bennett Road, Richmond

\$918,000



Situated in highly sought-after Central Richmond, this 2 bed, 2 bath townhouse is minutes from Brighthouse SkyTrain station (Canada Line), Richmond Center, Lansdowne Mall, T & T, Garden City Shopping Center, Minoru community centre, pool, library, 7/1 1, and restaurants. Enjoy a tranquil setting on a quiet inner street with a courtyard view. Upgraded appliances include refrigerator, dishwasher, washer, and dryer. A spacious two-car garage provides ample storage. Clubhouse amenities include hot tub, steam room, workshop, pool table, etc. This location falls within the catchment area for the highly ranked General Currie Elementary and RC Palmer Secondary schools. A must see! Open house Saturday Sept 14/24 2-4:00 pm.

KEY INFORMATION

MLS® R2889997

Residential Attached

Brighthouse South

2 Bedrooms

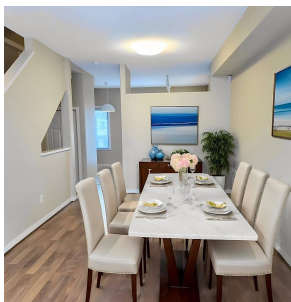
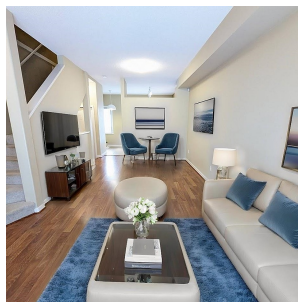
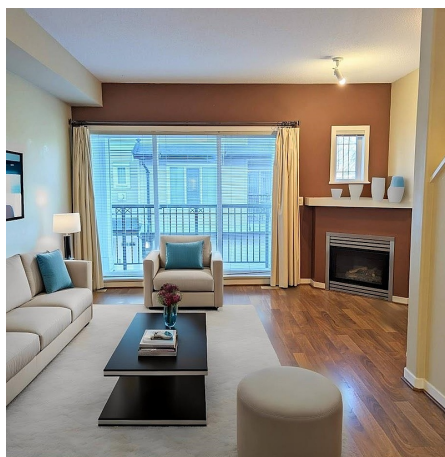
2 Bathrooms

1,253 SF

FEATURES

Year Built: 2001

Listed By: Royal Pacific Realty Corp.



rennie