

20138 Lorne Avenue, Maple Ridge

\$2,199,900



INVESTOR ALERT! This property has BIG potential for buyers looking for development or more..... The lot measures 160 feet in frontage by 120 feet in depth and is currently zoned RS-1 which allows for single family residential development. However, the Official Community Plan (OCP) supports a range of zoning options, including R1, RT-1 (Duplex), RT-2 (Triplex), CD-1-93 & RS-1B which provides significant development potential. In addition to huge opportunity, the character home is well kept and updated. Property has detached double garage with an RV bay, cleanout + storage room. Live, Enjoy, Hold, Rent or Develop, the possibilities are endless.

KEY INFORMATION

MLS® R2892396

Residential Detached

Southwest Maple Ridge

3 Bedrooms

1 Bathroom

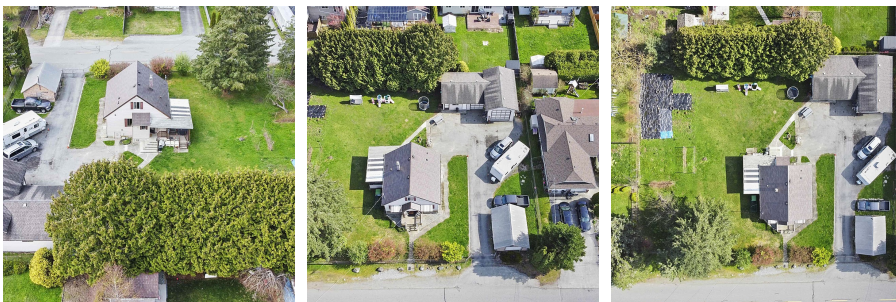
1,433 SF

19,236 SF Lot

FEATURES

Year Built: 1940

Listed By: Royal LePage Elite West



rennie