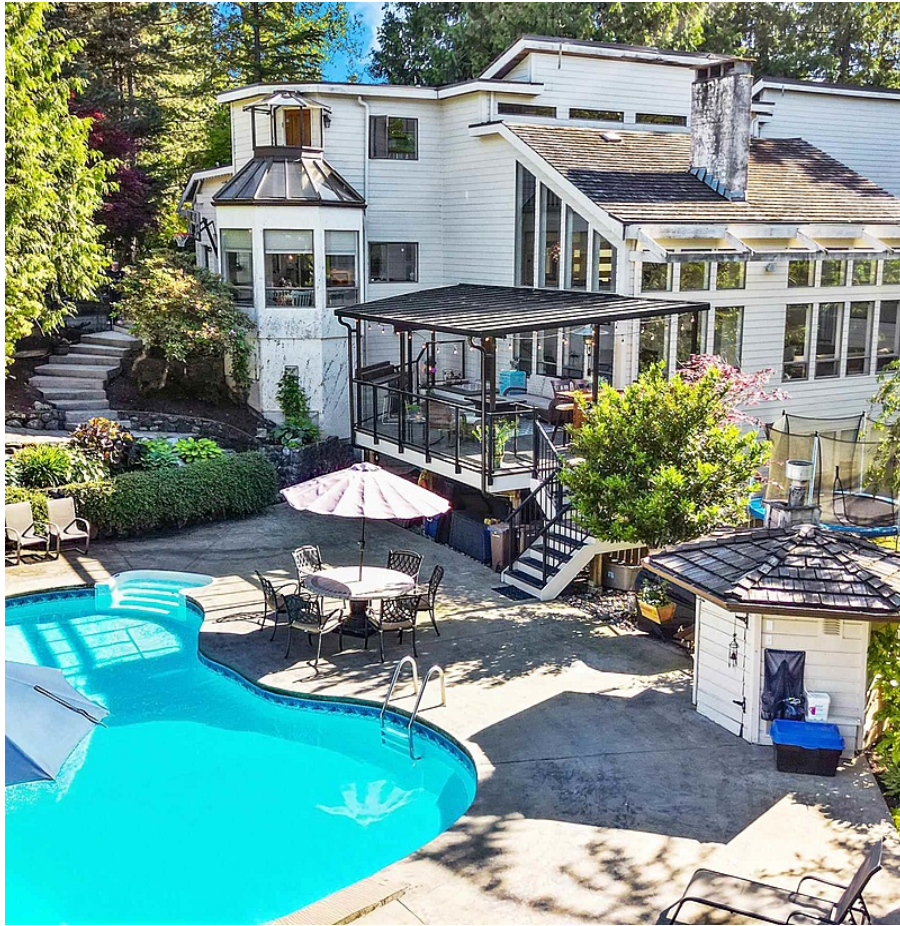


24325 126 Avenue, Maple Ridge

\$2,749,000



Nestled on a private acre in Academy Park, this stunning home offers tranquility and luxury. Just steps from the esteemed Meadow Ridge Private School, it features a bright, open-concept design with vaulted ceilings and expansive windows, embodying West Coast contemporary style. With 4 bedrooms and 5 bathrooms, this home is perfect for families and guests alike. The in-ground pool is complemented by a stamped concrete patio and extensive outdoor living areas. The fully finished walkout basement is perfect for entertaining, with a huge rec room, fireplace, 4th bedroom, full bath, and ample storage. The large master bedroom boasts a sitting area, walk-in closet, dressing room, and a private deck overlooking the greenbelt. Shopping, transit, recreation all within walking distance.

KEY INFORMATION

MLS® R2893256

Residential Detached

Websters Corners

4 Bedrooms

5 Bathrooms

5,335 SF

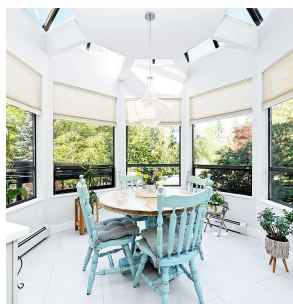
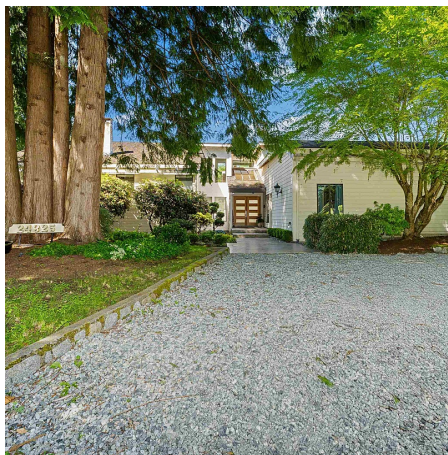
44,240 SF Lot

FEATURES

Year Built: 1981

Views: Mountains

Listed By: Royal LePage Elite West



rennie