

810 4815 Eldorado Mews, Vancouver

\$509,900



Efficient 1 Bed + Flex w/Balcony at 2300 Kingsway. This stylish Bright home offers open concept living w/a covered balcony to enjoy the panoramic views of downtown, trees & mountains. Chef's kitchen w/gas range, S/S fridge, & stone counters. Relax in your tranquil spa-like bath w/ soaker tub & tile surround and enjoy the flex area for all your in-suite storage solutions. Amazing building amenities include 2 level fitness centre w/ weights & cardio & a party room w/outdoor terrace. Centrally located in the vibrant Norquay Village Community, close to Trout Lake, T & T, Shoppers, and a 10 minute Skytrain ride Downtown. 1 parking, 1 locker & pet friendly. Add this to your investment portfolio or make this your first home!

KEY INFORMATION

MLS® R2893312

Residential Attached

Collingwood

1 Bedroom

1 Bathroom

414 SF

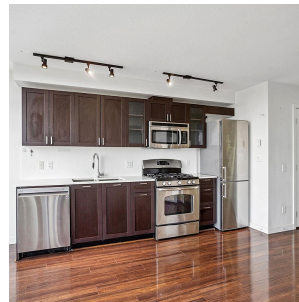
\$316.84 Maintenance Fees

FEATURES

Year Built: 2013

Views: CITY & MOUNTAINS

Listed By: rennie & associates realty ltd.



Salina Kai PREC*
604.773.7013
skai@rennie.com
rennie.com/salinakai



Danny Chow PREC*
604.765.2469
dchow@rennie.com
rennie.com/dannychow

rennie