

21 4337 Boundary Road, Richmond

\$1,189,900



Final phase of beautifully crafted townhome residences, quality construction with 100% hardie exterior, spacious 9' ceiling, with bright over sized windows. Quartz countertop, upgraded FISHER PAYKAL appliances. AC Delivering comfort throughout the entire home. Generous size fenced patio with balcony, perfect for those summer BBQ. Massive new park across from complex. Easy walk to north and south river. Ideal for dog lovers. Rapid commute to lower mainland/via frequent 410 bus and 22nd SkyTrain Minutes to Walmart, power center and other commercial services. Call L/S for promotional discount & down payment. Plan C3a has extra wide rear area with 12ft garage door. Can accommodate elevator at extra cost. Storage is built where elevator would be. Larger parking than standard. Level2 EV charger.

KEY INFORMATION

MLS® R2893757

Residential Attached

Hamilton

3 Bedrooms

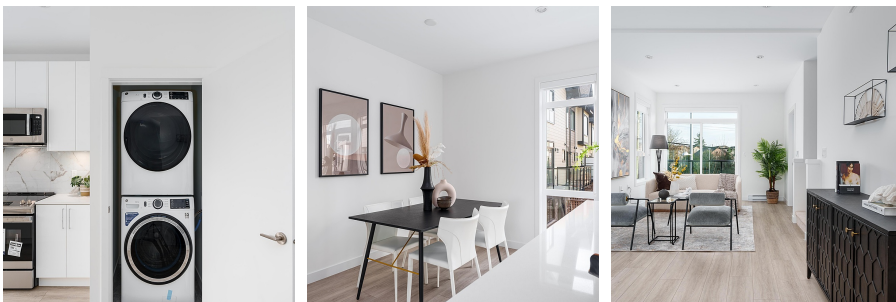
3 Bathrooms

1,292 SF

FEATURES

Year Built: 2026

Listed By: RE/MAX Crest Realty



rennie