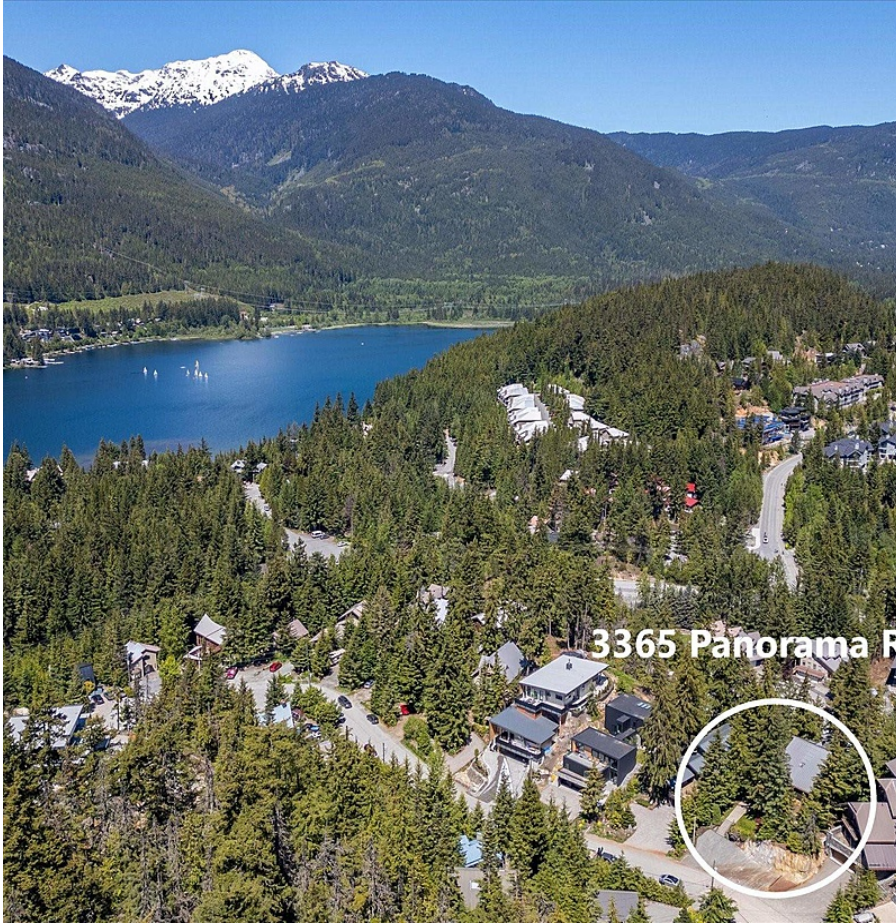


# 3365 Panorama Ridge, Whistler

\$2,795,000



Walk to the Village! This comfortable 4 bedroom home is located on a sunny lot with beautiful views and convenient location in one of Whistler's most desired Village area neighbourhoods. It has a family-friendly layout with spacious living areas, generous bedrooms, and a bonus loft space. Vaulted ceilings with skylights welcome natural light and a large wood burning fireplace provides a wonderful centerpiece and warms the home through the ski season. Ample parking, a huge storage area, and a private 1 bedroom revenue suite complete the package. Easy to view!

## KEY INFORMATION

MLS® R2894195

Residential Detached

Brio

5 Bedrooms

3 Bathrooms

2,477 SF

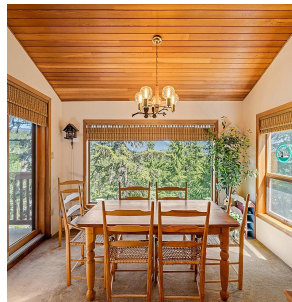
8,280 SF Lot

## FEATURES

Year Built: 1982

Views: Mountain views!

Listed By: Whistler Real Estate Company Limited



rennie