

32554 Murray Avenue, Abbotsford

\$1,164,900



Original builders own custom home in a quiet cul de sac conveniently located near hospital, shopping, restaurants, transit, schools and Mill Lake. 2 x 6 construction with several built-ins and custom features. Huge living room, spacious kitchen with an abundance of cabinets, custom pantry, granite counters and stainless steel appliances. Funky kids bedroom with loft could also be used as an office. Large laundry room. Newer laminate floors on main floor. New roof in 2016 and H2O tank in 2023. Downstairs has a huge rec room, den, 4 piece bath and wet bar and could be suited with access through garage. Long driveway provides for parking of up to six cars and a massive double garage with room for additional workshop space. 8 x 10 shed and a large wood deck with gazebo to entertain on.

KEY INFORMATION

MLS® R2894059

Residential Detached

Abbotsford West

4 Bedrooms

4 Bathrooms

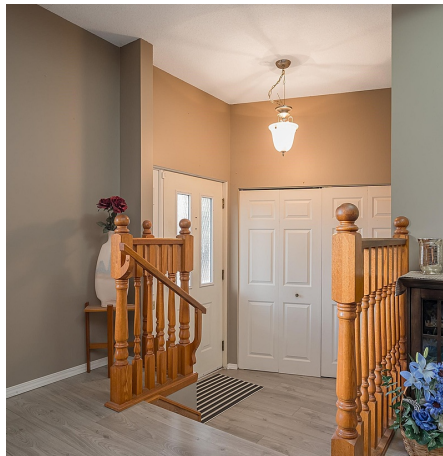
2,916 SF

7,815 SF Lot

FEATURES

Year Built: 1984

Listed By: Performance Power Play Realty



rennie