

1568 Salal Crescent, Coquitlam

\$1,999,000



3 Level house with walk out basement. This elegant home is located in Westwood Plateau, Coquitlam. It features high-quality finishes. The flat driveway leads to a grand entrance, opening to a spacious living/dining room with lofty ceilings and fireplaces. The well-equipped kitchen includes ample counter space, modern cabinets, and stainless steel appliances. The family room provides access to a patio and backyard. Upstairs, there are four bedrooms, including a master with a walk-in closet and an ensuite with double sinks. The basement, with a walk out separate entry, offers two to three bedrooms.

KEY INFORMATION

MLS® R2894895

Residential Detached

Westwood Plateau

6 Bedrooms

5 Bathrooms

3,529 SF

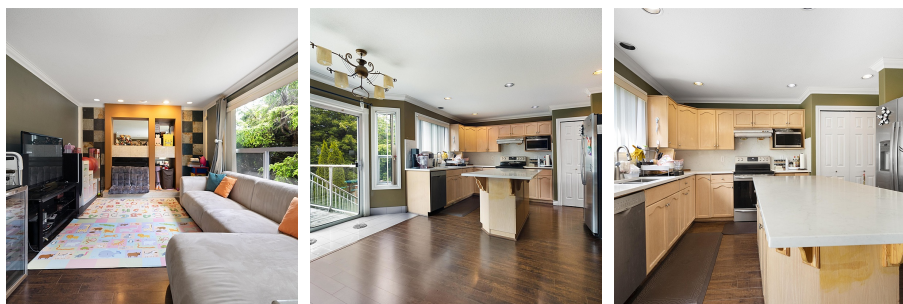
5,382 SF Lot

FEATURES

Year Built: 1993

Views: Mountain

Listed By: Magsen Realty Inc.



rennie