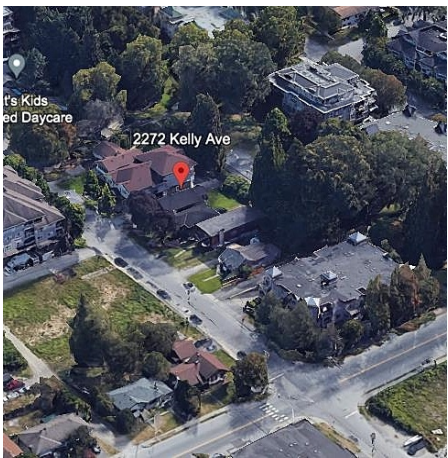


2272 Kelly Avenue, Port Coquitlam

\$1,400,000



Investors and builders alert! This is a fantastic investment opportunity in a rapidly growing and appreciating neighborhood. Redeveloping this property can yield significant returns, making it an attractive option for developers and investors looking to capitalize on the area's growth. RA1 zoning which allows multiple dwellings/residential bldgs up to 1.5 FSR / 4 stories high. This prime location ensures high demand and an excellent return on investment for any redevelopment project. easy access to a variety of amenities, including restaurants, cafes, shopping boutiques, schools, public transportation, and recreational facilities. Enjoy the convenience of nearby parks, walking trails, and quick access to major highways for an effortless commute. Dont miss out. Call for showings today!

KEY INFORMATION

MLS® R2895171

Residential Detached

Central Port Coquitlam

2 Bedrooms

1 Bathroom

2,132 SF

4,323 SF Lot

FEATURES

Year Built: 1919

Listed By: Royal Pacific Realty (Kingsway) Ltd.

rennie