

# 102 3582 Ryder Hesjedal Way, Colwood

\$449,900



Discover a reimagined approach to condo living by the award-winning developer PCRE. This thoughtfully designed JR 1 BDRM home offers a perfect blend of style & functionality. Enjoy the expansive feel with over-height ceilings and a spacious patio that provides convenient secured in-and-out access, ideal for pet owners and gardeners looking to soak up the sun. A chef-inspired kitchen where you can cook in style with quartz countertops, a stainless-steel appliance package, induction cooktop & built-in storage solutions. Exclusive Clubhouse features a social lounge, fully-equipped fitness centre & work-from-home space. Unwind in a luxury outdoor hot tub, sauna, cold plunge & outdoor shower. Surrounded by over 2 acres of green space, community gardens, bocce court & more. Practical conveniences include an Innova 2.0 cooling system, secured bike storage, EV-ready parking, and guest suite. Steps away from the Commons and the ocean, providing a serene and vibrant community setting. Price+GST (id:56120)



## KEY INFORMATION

MLS® 967595

Residential Attached

Royal Bay

1 Bedroom

1 Bathroom

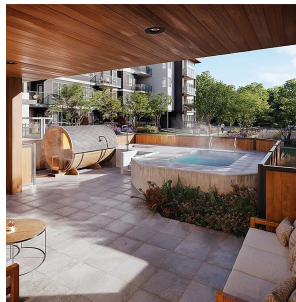
474 SF

474 SF Lot

## FEATURES

Year Built: 2026

Listed By: rennie & associates realty ltd.



PCRE  
At Royal Bay



Plan Type:  
1 Bed + 1 Bath  
474 SF (474 SF)  
Entry - 10' x 10' x 10'  
Main - 10' x 10' x 10'



**Nickole Goeujon**  
250.686.0078  
ngoeujon@rennie.com  
rennie.com/nickolegoeujon



**Quinn van Gylswyk**  
250.888.0729  
qvangylswyk@rennie.com  
rennie.com/quinnvangylswyk

**rennie**