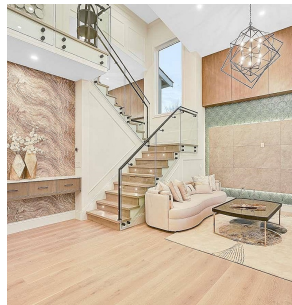
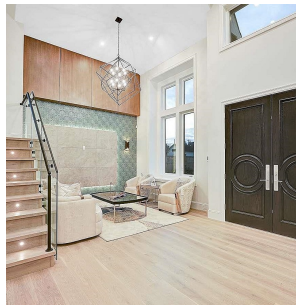
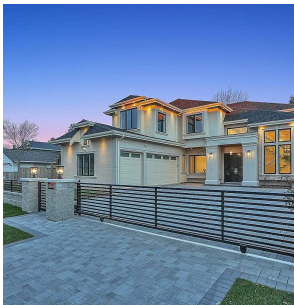
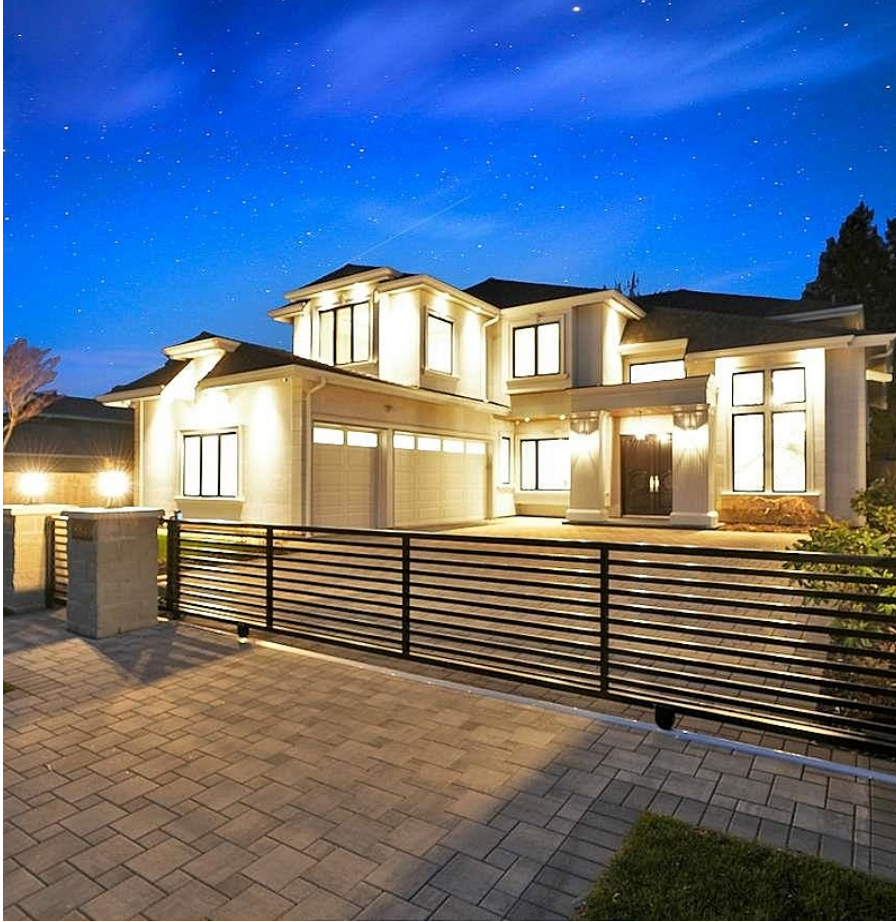


8840 Dorval Road, Richmond

\$3,680,000



Custom-built home sits on 7019 sf lot with 3,502 SQFT living space in central WOODWARDS NEIGHBORHOOD. This modern style home boosts an open concept, One Bedroom Legal Suite on the main floor, full of exquisite details inside and out. Great open floor plan including 5bedrms + 6 bathrms +2 kitchens+ 2 laundries+3 car garage . built-in speaker system throughout, high end wallpaper, high ceilings in living and family room. One bedroom nanny suite or in-law suite provides independent living space. Spice Kitchen, and Main Kitchen with high-end stainless-steel appliances. Sound surrounding system, A/C, HRV, radiant heat, sprinkler system, etc..... Walking distance to Blundell center. Close schools, shopping & public transits. School catchment: Blundell Elementary & Steveston London Secondary

KEY INFORMATION

MLS® R2898735

Residential Detached

Woodwards

5 Bedrooms

7 Bathrooms

3,502 SF

7,019 SF Lot

FEATURES

Year Built: 2024

Listed By: Royal Pacific Realty Corp.

rennie