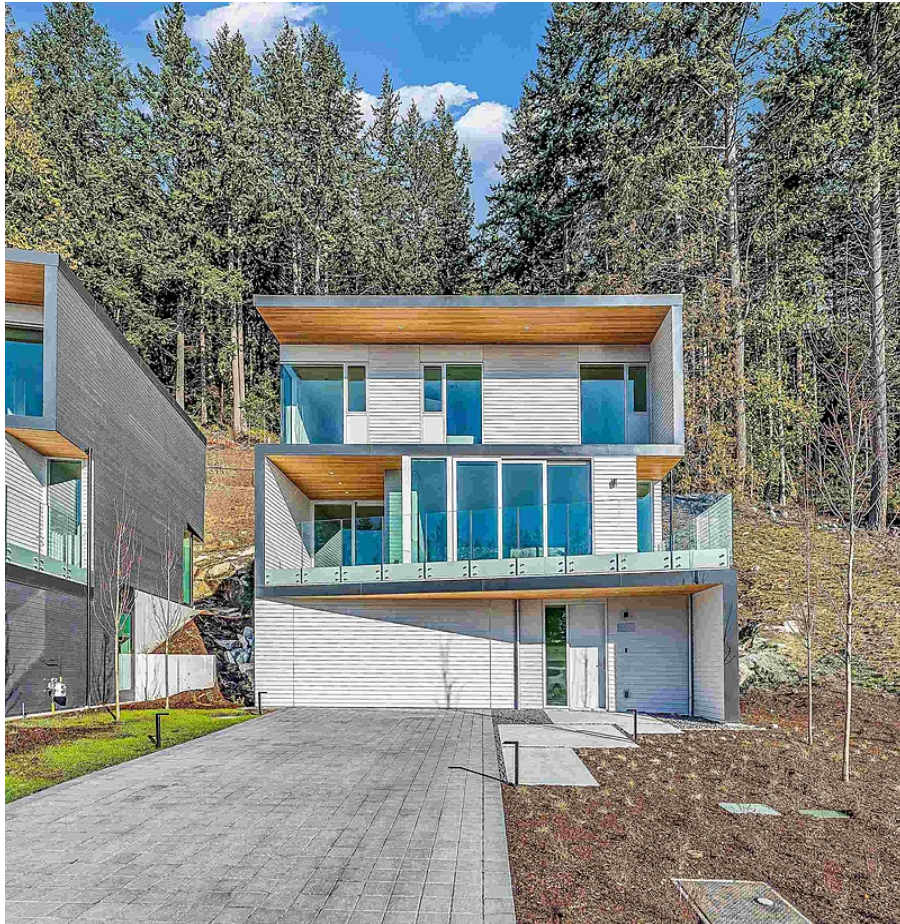


3317 Chippendale Road, West Vancouver

\$4,499,000



Beedie Living introduces Alpine - freehold, west coast modern homes in the Uplands community of British Properties. Designed by BattersbyHowat, this 4 bed, 3.5 bath + den, 3 level upper home shines through with floor-to-ceiling windows that capture amazing water & city views, an integrated gas fireplace in the living room and an inviting wood slat staircase feature wall in the dining room. The kitchen features an island up to 12 ft w/ double waterfall edge, extensive pantry storage and integrated appliances by Miele & Bosch. Year round, enjoy a backyard with a paved patio with gas & water bibs. This home has a level driveway - rare find in the British Properties - with a double car garage. Within minutes, enjoy access to ski slopes, forested trails and Mulgrave School. Secure your home today

KEY INFORMATION

MLS® R2899796

Residential Detached

Cypress Park Estates

4 Bedrooms

4 Bathrooms

2,605 SF

6,856 SF Lot

FEATURES

Year Built: 2024

Views: Ocean, City, Downtown Vancouver

Listed By: Sutton Group-West Coast Realty

